



**Nacra17**  
**European Championships**  
Kiel, Germany  
27 July to 04 August 2017

# **SAILING INSTRUCTIONS**

The Organizing Authority is Kieler Yacht-Club supported by Norddeutscher Regatta Verein in conjunction with the International Nacra 17 Class Association

Contact: Kieler Yacht-Club e.V. Kiellinie 70, 24105 Kiel, Germany  
Tel.: +49 431 8 50 23, Fax: +49 431 8 39 39, e-mail: regatta@kyc.de

[NP] denotes a rule that shall not be grounds for protests by a boat. This changes RRS 60.1(a).

[DP] denotes a rule for which the penalty is at the discretion of the Jury.

[SP] denotes a rule for which a standard penalty may be applied by the race committee without a hearing or a discretionary penalty applied by the International Jury with a hearing; and

## 1. RULES

- 1.1 The regatta will be governed by the rules as defined in *The Racing Rules of Sailing* and the High Speed Test Rules.
- 1.2 RRS Appendix P, *Special Procedures for Rule 42*, will apply (see SI 17.2)
- 1.3 No National Authority prescriptions will apply.
- 1.4 For the Medal Races, World Sailing Addendum Q (as posted on the official notice board) takes precedence over any conflicting instructions except NoR para 1.3.
- 1.5 The Class Rules and the Race Management Guidelines of the International Nacra 17 Class Association will apply except for any that are altered by the Notice of Race or the Sailing Instructions
- 1.6 Penalties for breaches of RRS 41, the Class Rules or the Equipment Inspection Regulations are at the discretion of the International Jury.
- 1.7 If there is a conflict between languages the English text will take precedence.
- 1.8 The jib area, except for the window, shall be restricted to Class and Event advertising and all competitors shall place class nominated branding on their jibs according to the World Sailing approved Nacra 17 class jib advertising policy

## 2. IDENTIFICATION [DP][NP]

- 2.1 Boats will be required to affix the stickers provided by the Organising Authority on both side of the forward 25% of the hull, 200mm from the bow (and shall comply with any instructions issued by the Organising Authority).
- 2.2 The overall leaders shall wear the yellow coloured lycra jerseys whilst racing. These jerseys will be available at the Race Office each day from two hours before the first scheduled warning signal of the day.

## 3. CAMERAS AND ELECTRONIC EQUIPMENT [DP]

- 3.1 [SP] Boats may be required to carry on board cameras, sound equipment or positioning equipment as specified by the Organising Authority. Competitors may also use their own camera recording equipment and attachments, but these are to be removable for weighing. No request for redress by a boat may be based on a claim involving this equipment. This changes RRS 62.1
- 3.2 [DP][SP][NP] The Organising Authority may supply GPS units for use during the Opening Series and Medal Races Series. Boats shall carry these GPS units while racing. The GPS units shall be picked up every morning at the Check-In desk and shall be returned no later than the end of protest time.
- 3.3 A media TV boat may be positioned inside the racing area. This will not be grounds for redress. This changes RRS 62.1(a)
- 3.4 Drones are not permitted over the racing area.

**4. NOTICES TO COMPETITORS**

Notices to competitors will be posted on the official notice board located in the Race Office.

**5. CHANGES TO SAILING INSTRUCTIONS**

Any change to the sailing instructions will be posted not less than two hours before the scheduled warning signal on the day it will take effect, except that any change to the schedule of races, will be posted by 20.00 the day before it will take effect.

**6. SIGNALS MADE ASHORE**

6.1 Signals made ashore will be displayed at the official flagpole located immediately outside the Race Office. When a signal is displayed over a class or fleet flag, it applies to that class or fleet only.

6.2 [DP][NP] Flag D displayed ashore with one sound signal this means: “the warning signal will be made not less than 60 minutes after flag D is displayed except for the fleets assigned to races areas INDIA and HOTEL for which the warning signal will be made not less than 30 minutes after flag D is displayed.” Boats shall not leave their allocated berth until this signal is made.

**7. SCHEDULE OF EVENTS**

7.1 The Championship schedule will be as follows;

Thursday 27 July	0900 - 1800	Registration/Inspection
Friday 28 July	0900 - 1800	Registration/Inspection
	1800	Mandatory Safety Briefing
Saturday 29 July	0900 - 1100	Registration/Inspection
	1300	Practice Races
	1830	Competitors meeting
	1900	Opening Ceremony
Sunday 30 July	1055 warning	Practice Races
Monday 31 July	1055	Qualifying Races
Tuesday 1 August	1055	Qualifying Races
Wednesday 2 August	1055	Fleet Races
Thursday 3 August	1055	Fleet Races
Friday 4 August	0955	Fleet Races
	1155	Medal Races
		Prize Giving and Closing Ceremony

as soon as possible after the Medal Races

7.2 On Friday 4 August there will be no warning signal after 1600 for those taking part in the Fleet Races and after 1700 for those taking part in the Medal Races.

**8. FORMAT OF RACING - OPENING SERIES AND MEDAL RACES SERIES**

The regatta will consist of an Opening Series and Medal Races Series. These races are as described in Attachment C. The provisional racing schedule is described in Attachment D

**9. CLASS FLAGS**

9.1 In the Opening Series, the class flag will be a Nacra class insignia on a background of yellow for Nacra Foiling and red for Nacra C-foiling.

9.2 In the Medal Races, the class flags for the Finals will be the Nacra class insignia on a background of yellow

**10. RACING AREAS**

- 10.1 Attachment B shows the location of the race area.
- 10.2 Initial assignment of fleets to the racing area will be posted before flag D is displayed, see SI 6.2.
- 10.3 [DP][NP] Boats not racing shall not sail in the course area being used by another fleet.
- 10.4 For the Medal Races the location of the racing area will be posted on the official notice board.

**11. THE COURSES**

- 11.1 Attachment A shows the course to be sailed, the order in which the marks are to be passed, the side on which each mark is to be left, and the signals indicating the number of rounds to be sailed.
- 11.2 No later than the warning signal, the race committee signal vessel may display the approximate compass bearing from the race committee signal vessel to Mark 1.
- 11.3 There will be an offset mark at the windward mark and a gate at the leeward mark.
- 11.4 A gate may be replaced by a single mark to be left to port
- 11.5 On the last leg to the finish, the leeward gate is not a rounding mark.

**12. MARKS**

Racing area ECHO.....	Orange Cylinders
Racing area HOTEL.....	Yellow Cylinders
Racing area INDIA.....	Orange Cylinders
Racing area JULIETT.....	Yellow Cylinders
Change marks will be the same as the originals but will have a black band	
Starting marks.....	Race Committee vessels
Finishing marks.....	Race Committee vessels

**13. THE START**

- 13.1 The starting line will be between staffs displaying orange flags on the starting marks.
- 13.2 [NP][DP] Boats whose warning signal has not been made shall avoid the starting area.
- 13.3 A boat starting later than four minutes after her starting signal will be scored Did Not Start. This changes RRS A4 and A5.
- 13.4 To alert boats that a race or sequence of races will begin soon, the orange starting line flag will be displayed with ONE sound signal not less than TWO minutes before the warning signal is displayed.
- 13.5 [DP] A buoy may be attached to the race committee starting vessel ground tackle. Boats shall not pass between this buoy and the race committee starting vessel at any time

**14. CHANGE OF THE NEXT LEG OF THE COURSE**

To change the next leg of the course, the race committee will lay a change mark, as detailed in SI 12. When a new mark is laid, the original mark will be removed as soon as possible.

**15. THE FINISH**

The finishing line will be between staffs displaying orange flags on the finishing marks.

**16. TIME LIMITS**

- 16.1 Time limits and target times are as follows:  
Time limit.....45 minutes  
Mark 1 time limit.....15 minutes  
Target time.....30 minutes or as described in Appendix C
- 16.2 If no boat has passed mark 1 within the mark 1 time limit, the race will be abandoned.
- 16.3 Boats failing to finish within 15 minutes after the first boat sails the course and finishes will be scored Did Not Finish without a hearing. This changes RRS 35, A4 and A5.

**17. PENALTY SYSTEM**

- 17.1 RRS 44.1 and RRS P2.1 are changed so that the Two-Turns penalty is replaced by a One-Turn penalty.
- 17.2 Appendix P, *Special Procedures for Rule 42* will apply, as changed by SI 17.1
- 17.3 Penalties for breaches of NOR 17 (Insurance), NOR 19 (Media Rights), the ER, class rules and rules in the Notice of Race and Sailing Instructions marked [DP], are at the discretion of the protest committee. A boat may accept a discretionary penalty before a hearing concerning the same incident by completing a form available at the jury office.
- 17.4 Breaches of rules in the SIs marked [NP] will not be grounds for a protest by a boat. This changes RRS 60.1(a).
- 17.6 For breaches of the SIs marked [SP], the race committee may apply a standard penalty without a hearing. A list of these breaches and the associated standard penalties will be posted on the Official Notice Board. However, the race committee may protest a boat when they consider the standard penalty to be inappropriate. A boat that has been penalised with a standard penalty can neither be protested for the same incident by another boat nor can another boat request redress for this race committee action. This changes RRS 60.1, 63.1 and Appendix A5.

**18. PROTESTS AND REQUESTS FOR REDRESS**

- 18.1 Protest forms are available at the race office. Protests and requests for redress or reopening shall be delivered there within the protest time limit.
- 18.2 The protest time limit will be posted on the jury notice board located at the Race Office. The protest time limit will be 60 minutes after the last boat of each fleet has finished the last race of the day or the race committee signals no more racing today, whichever is later. The same time limit applies to protests by the race committee and jury about incidents they observe in the racing area. This time limit also applies to requests for redress. This changes RRS 61.3 and 62.2.
- 18.3 Notices will be posted within 30 minutes of the protest time limit to inform competitors of hearings in which they are parties or named as witnesses. Hearings will be held in the jury room located next door to the Race Office. Hearings may start before the scheduled time with the agreement of all parties.
- 18.4 The race committee, technical committee or jury intending to protest a boat under RRS 60.2 or 60.3 will comply with RRS 61.1(b) by informing her by posting a notice before the end of the protest time limit of the last fleet to finish.
- 18.5 A list of boats that have been penalised under RRS Appendix P on the water or have been disqualified by the jury will be posted on the official notice board.
- 18.6 For the purposes of RRS 64.3(b) the 'authority responsible' is the technical committee appointed by the Organising Authority.
- 18.7 On the last day of fleet racing of each series a request for reopening a hearing shall be delivered:

- i) within the protest time limit if the party requesting reopening was informed of the decision on the previous day;
  - ii) no later than 30 minutes after the party requesting reopening was informed of the decision on that day. This changes RRS 66.
- 18.8 On the last scheduled day of fleet racing of each series a request for redress from a jury decision shall be delivered no later than 30 minutes after the decision was posted. This changes RRS 62.2.
- 18.9 The time limit for requests under RRS N1.3(b) is 5 minutes after a party is informed of a decision.

## 19. INTERNATIONAL JURY

Decisions of the international jury will be final as provided in RRS 70.5

## 20. SCORING

### 20.1 Opening Series

20.1.1 The low point scoring system of Appendix A, as changed below, will apply to the Opening Series races.

20.1.2 For all fleets, SIX Opening Series races are required to be completed to constitute a series.

20.1.3 When 4 or more races have been completed, a boat's Opening Series score shall be the total of her race scores excluding her worst score.

20.2 The boats competing in the Medal Race will be placed 1st to 8th based on their total score. The remaining boats will be placed from 9th onwards based on their total score.

### 20.3 Medal Races

See Attachment C for details

### 20.4 Resolving Ties

20.4.1 In the Opening Series ties will be broken in accordance with RRS A8.

20.4.2 In the Medal Races Series, ties will be broken in accordance with RRS A8.2 and ranked in order of their scores in the Medal Races.

### 20.5 Scoring enquiries

To request correction of an alleged error in posted race or series results, a boat shall complete a scoring enquiry form available at the race office. Scoring enquiry forms shall be delivered to the race office. A scoring enquiry may be regarded as a request for redress.

## 21. SAFETY [DP] [NP]

21.1 [SP] Each competitor will be issued with an identification badge at registration. Each competitor shall, before going afloat each day, by dropping their tally from the "Check-Out/ Check-in wall" into the basket at the Race Office. Immediately on returning to shore each competitor shall check-in by again dropping their tally into the basket.

21.2 Boats not leaving the shore for the day's races shall notify the race office as soon as possible.

21.3 A boat that retires from a race shall notify the race committee as soon as possible.

### FOR FULL FOILING BOATS

21.4.1 Each crew member shall wear a helmet that shall be to the minimum standard EN1385 or EN1077 or equivalent with at least 300 square centimetres of the exterior surface in a high visibility colour.

21.4.2 Each crew member may wear body protection, if the body protection also acts as a personal flotation device it shall comply with Class Rule 3.1

- 21.4.3 Each crew shall carry a cutting device with a blade length of no more than 150mm
- 21.4.4 If flag T is flown on the Race Committee boat before the warning signal of a race then helmets need not be worn.
- 21.5 When Flag V is displayed by the race committee signal vessel, coach and other support boats will collaborate with the race committee in rescue tasks.
- 21.6 Boats shall avoid commercial traffic and shall cross shipping channels at right angles only.
- 21.7 In case of a critical weather situation the race committee will give the following signal: three guns with green signal ammunition from a race committee vessel. The signal will be given after all races in the racing area are abandoned. This means:
- For boats: Safety first for all crews. Sail in the safest way to the next harbour.
  - For all support boats, coach and spectator boats: Observe and escort competitors leaving the racing area the course and support the race committee in rescuing crews and boats.
  - All support and spectator boats shall monitor VHF channel 16 for search and rescue instructions.
- 21.8 The race office telephone number is: +49 (0) 431 240 15 10
- 21.9 If the crew is rescued from a boat the sailboat shall be marked by the crew or a support person with a red-white-striped hazard tape to signal that the crew is safe. If possible the tape shall be tied at or near the bow of the boat.

## 22. REPLACEMENT OF CREW OR EQUIPMENT [DP][NP]

- 22.1 Replacement of helm, crew or equipment shall require written approval of the PRO
- 22.2 Request for replacement of helm, crew or equipment shall be made to the PRO at the first reasonable opportunity. On Friday 4 August any replacement equipment shall be approved no later than the protest time limit.

## 23. EQUIPMENT AND MEASUREMENT CHECKS [DP][NP]

- 23.1 All boats will be inspected for class rules compliance prior to racing. Boats shall be presented for measurement checks at the times prescribed in SI 7.
- 23.2 In addition, any boat or equipment may be checked for compliance with the class rules and sailing instructions at any time. On the water, a boat can be instructed by a race committee measurer to proceed immediately to a designated area for measurement checks.
- 23.3 Limitations of equipment  
Only one set of sails shall be used during the regatta. The sails shall be presented and will be either stamped or signed during the initial inspection.
- 23.4 All boats, when not afloat, shall be placed in the official dinghy park.

## 24. OFFICIAL BOATS

Official boats will be identified as follows:

Race committee boats.....	White flag with RC
Jury boats.....	White flag with JURY
Technical Committee.....	White flag with M
Rescue / Medical.....	Pink flag with numbers and “Wasserwacht” or “DLRG”
Media boats.....	Red or Green flag with PRESS
TV boat.....	Yellow flag with TV

## 25. SUPPORT BOATS [DP][NP]

- 25.1 Team leaders, coaches and other support personnel shall not be in the area where

boats are racing or within 50 metres of any boat racing from the time of the preparatory signal for the first fleet to start until all boats have finished or the race committee signals a postponement, general recall or abandonment. This SI does not apply during rescue operations.

- 25.2 At all times while on water, support boats shall display either their national flag on a staff with the top of the hoist minimum 1.5 m above water level or their national code letters (minimum height 200mm) on the outside of the hull or on the outboard motor cover. Additionally each support boat shall display the two numbered stickers supplied by the Organising Authority on each side of the bow of the support boat.
- 25.3 Support boats that are motoring at more than 5 knots shall remain at least 150 metres from any boat that is racing.
- 25.4 Support boats shall comply with any reasonable request from a regatta official.
- 25.5 All support boats are at all times submitted to the Organising Committee and Race Committee authority, are legally considered as assistance / rescue boats and must comply with any instructions given by these authorities or by the police.
- 25.6 The International Jury may direct the Organising Authority to revoke privileges from any boat or person found to be in breach of SI 25.

## 26. TRASH DISPOSAL [DP][NP]

As sailors, we seek to protect and restore our oceans and coastal waters. Boats shall not intentionally put trash in the water. Trash may be placed aboard support and race committee boats. The penalty for breaking RRS 55 is at the discretion of the Jury and may be less than disqualification.

## 27. RADIO COMMUNICATION [DP][NP]

A boat shall neither make radio transmissions while racing nor receive radio communications not available to all boats. This restriction also applies to mobile telephones.

## 28. PRIZES

The Organising Authority will provide prizes to the first three boats in each class.

## 29. RISK STATEMENT

RRS 4 of the Racing Rules of Sailing states: “The responsibility for a boat’s decision to participate in a race or to continue racing is hers alone.”

Sailing is by its nature an unpredictable sport and therefore inherently involves an element of risk. By taking part in the event, each competitor agrees and acknowledges that:

- a) They are aware of the inherent element of risk involved in the sport and accept responsibility for the exposure of themselves, their crew and their boat to such inherent risk whilst taking part in the event;
- b) They are responsible for the safety of themselves, their crew, their boat and their other property whether afloat or ashore;
- c) They accept responsibility for any injury, damage or loss to the extent caused by their own actions or omission;
- d) Their boat is in good order, equipped to sail in the event and they are fit to participate;
- e) The provision of a race management team, patrol boats and other officials and volunteers by the event organiser does not relieve them of their own responsibilities;
- f) The provision of patrol boat cover is limited to such assistance, particularly in



- extreme weather conditions, as can be practically provided in the circumstances
- g) It is their responsibility to familiarize themselves with any risks specific to this venue or this event drawn to their attention in any rules and information produced for the event and to attend any safety briefing held for this event.

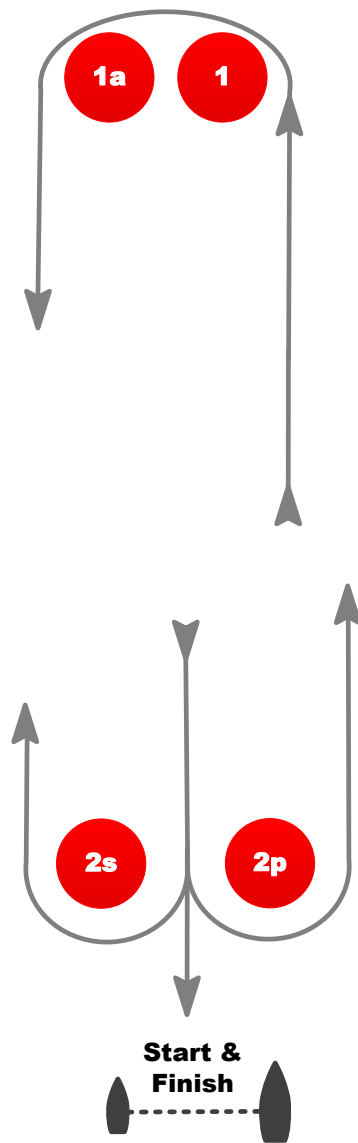
**30. INSURANCE [DP] [NP]**

Each participating boat shall have valid third-party liability insurance with a minimum cover of at least Euros 1,500,000 (or equivalent) per incident.

Attachment A

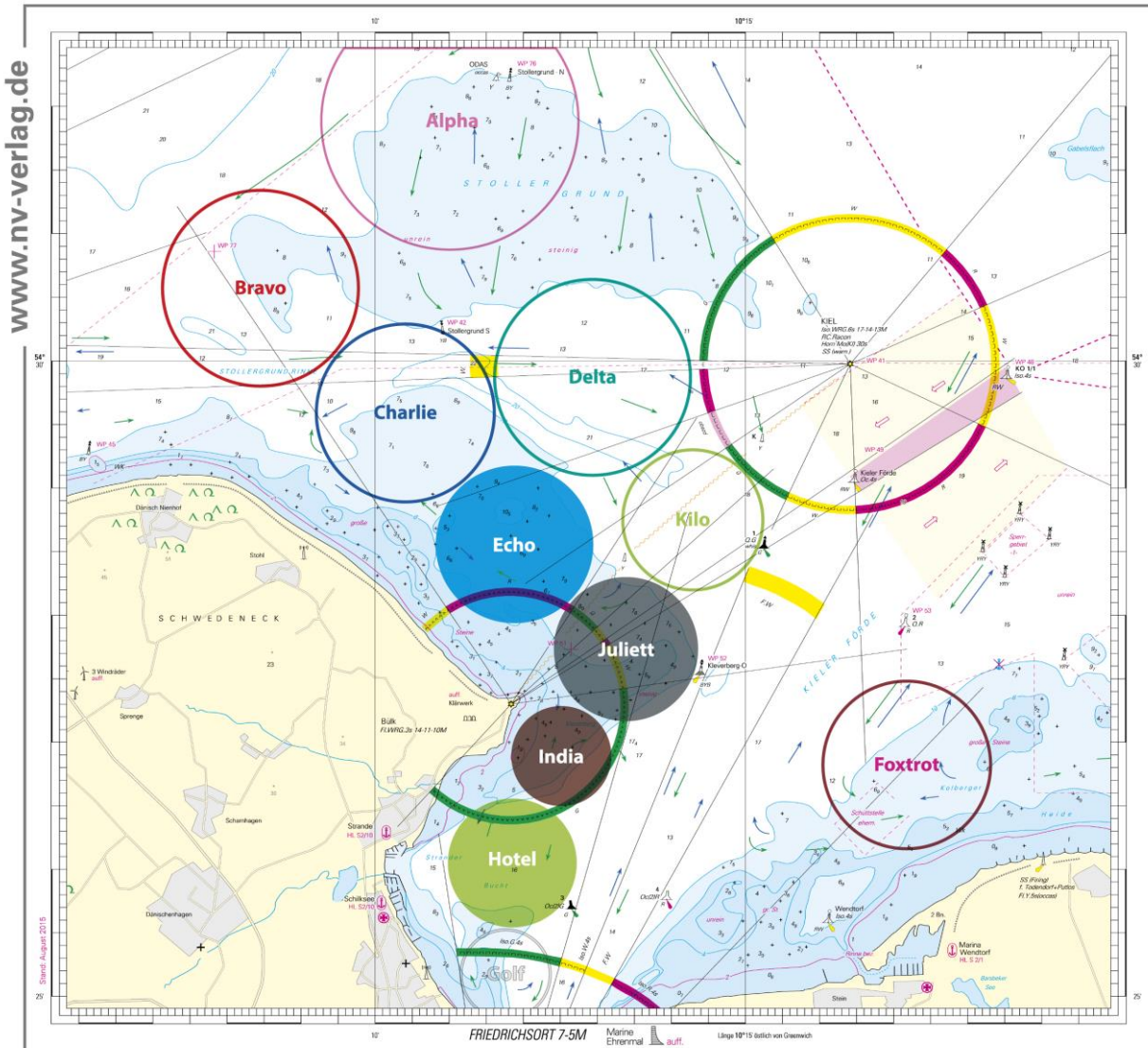
Course Diagram

<b>LA</b>	<b>COURSE: WINDWARD / LEEWARD with spreader mark and leeward finish</b>
<b>Signal</b>	<b>Mark Rounding Order</b>
<b>LA2</b>	<b>Start – 1 – 1a – 2s/2p – 1 – 1a – Finish</b>
<b>LA3</b>	<b>Start – 1 – 1a – 2s/2p – 1 – 1a – 2s/2p – 1 – 1a – Finish</b>
<b>LA4</b>	<b>Start – 1 – 1a – 2s/2p – 1 – 1a – 2s/2p – 1 – 1a – 2s/2p – 1 – 1a – Finish</b>



Attachment B

Course Locations



NV. Regattakarte

## Attachment C                      Format of Racing

The Championship will consist of:

1. Opening Series
2. Medal Races Series

**1.        Opening Series** (Days 2 to 6)

- 1.1        Boats will sail in ONE fleet for Nacra Foiling and ONE fleet for Nacra C-Foiling. The Opening Series will consist of a maximum of FOURTEEN races and a minimum of SIX races. Up to THREE races are scheduled each day.

**2.        Medal Races Series** (Day 6)

- 2.1        No warning signal for the Medal races will be made after 17.00 on Friday 4 August.
- 2.2        The Medal Race will be for the top 8 boats overall. THREE races, target time 10 minutes, single low points scoring.
- 2.3        Medal Race boats shall be made available for equipment inspection no later than 45 mins before the Medal Race warning signal. A quarantine area may be set aside for the competing Medal Race boats. Boats shall comply with any instructions of the technical committee concerning inspection or quarantine.

## Attachment D Provisional Racing Schedule

### 2017 European Championships

#### Warning signal

#### Day 0 – 29 July Practice Day

	Course HOTEL	Course INDIA	Course JULIETT	Course ECHO
14:00	Practice Race - 49er 1	Practice Race - 49erFX 1		
14:30	Practice Race - 49er 2	Practice Race - 49erFX 2		
15:00	Practice Race - Nacra Foiling	Practice Race - Nacra C-Foil		

#### Day 1 – 30 July Qualifying

	Course HOTEL	Course INDIA	Course JULIETT	Course ECHO
11:00	49erFX Yellow Qual R1	49erFX Blue Qual R1	49erFX Red Qual R1	Practice Race - Nacra Foiling
ASAP	49erFX Yellow Qual R2	49erFX Blue Qual R2	49erFX Red Qual R2	
ASAP	49erFX Yellow Qual R3	49erFX Blue Qual R3	49erFX Red Qual R3	
Not Before 13:30	49er Yellow Qual R1	49er Blue Qual R1	49er Red Qual R1	Practice Race - Nacra C-Foil
ASAP	49er Yellow Qual R2	49er Blue Qual R2	49er Red Qual R2	
ASAP	49er Yellow Qual R3	49er Blue Qual R3	49er Red Qual R3	
ASAP	49er Yellow Qual R4	49er Blue Qual R4	49er Red Qual R4	

#### Day 2 – 31 July Qualifying

	Course HOTEL	Course INDIA	Course JULIETT	Course ECHO
11:00	49er Red Qual R5	49er Yellow Qual R5	49er Blue Qual R5	Nacra C-Foil R1
ASAP	49er Red Qual R6	49er Yellow Qual R6	49er Blue Qual R6	Nacra C-Foil R2
ASAP	49er Red Qual R7	49er Yellow Qual R7	49er Blue Qual R7	Nacra C-Foil R2
Not Before 13:30	49erFX Red Qual R4	49erFX Yellow Qual R4	49erFX Blue Qual R4	Nacra Foiling R1
ASAP	49erFX Red Qual R5	49erFX Yellow Qual R5	49erFX Blue Qual R5	Nacra Foiling R2
ASAP	49erFX Red Qual R6	49erFX Yellow Qual R6	49erFX Blue Qual R6	Nacra Foiling R3
ASAP	49erFX Red Qual R7	49erFX Yellow Qual R7	49erFX Blue Qual R7	

#### Day 3 – 1 Aug Qualifying

	Course HOTEL	Course INDIA	Course JULIETT	Course ECHO
11:00	49erFX Blue Qual R8	49erFX Red Qual R8	49erFX Yellow Qual R8	Nacra Foiling R4
ASAP	49erFX Blue Qual R9	49erFX Red Qual R9	49erFX Yellow Qual R9	Nacra Foiling R5
ASAP	49erFX Blue Qual R10	49erFX Red Qual R10	49erFX Yellow Qual R10	Nacra Foiling R6
Not Before 13:30	49er Blue Qual R8	49er Red Qual R8	49er Yellow Qual R8	Nacra C-Foil R4
ASAP	49er Blue Qual R9	49er Red Qual R9	49er Yellow Qual R9	Nacra C-Foil R5

**Sailing Instructions – Final**
**Nacra 17 European Championships**

ASAP	49er Blue Qual R10	49er Red Qual R10	49er Yellow Qual R10	Nacra C-Foil R6
<b>Day 4 – 2 Aug Fleet Racing</b>	<b>Course HOTEL</b>	<b>Course INDIA</b>	<b>Course JULIETT</b>	<b>Course ECHO</b>
11:00	49er Gold F1	49er Silver F1	49er Bronze F1	Nacra C-Foil R7
ASAP	49er Gold F1	49er Silver F2	49er Bronze F2	Nacra C-Foil R8
ASAP	49er Gold F1	49er Silver F3	49er Bronze F3	Nacra C-Foil R9
Not Before 13:30	49erFX Gold F1	49erFX Silver F1	49erFX Bronze F1	Nacra Foiling R7
ASAP	49erFX Gold F2	49erFX Silver F2	49erFX Bronze F1	Nacra Foiling R8
ASAP	49erFX Gold F3	49erFX Silver F3	49erFX Bronze F1	Nacra Foiling R9
<b>Day 5 – 3 Aug Fleet Racing</b>	<b>Course HOTEL</b>	<b>Course INDIA</b>	<b>Course JULIETT</b>	<b>Course ECHO</b>
11:00	49erFX Gold F4	49erFX Bronze F4	49erFX Silver F4	Nacra Foiling R10
ASAP	49erFX Gold F5	49erFX Bronze F5	49erFX Silver F5	Nacra Foiling R11
ASAP	49erFX Gold F6	49erFX Bronze F6	49erFX Silver F6	Nacra Foiling R12
Not Before 13:00	49er Gold F4	49er Bronze F4	49er Silver F4	Nacra C-Foil R10
ASAP	49er Gold F5	49er Bronze F5	49er Silver F5	Nacra C-Foil R11
ASAP	49er Gold F6	49er Bronze F6	49er Silver F6	Nacra C-Foil R12
<b>Day 6 – 4 Aug Fleet Racing</b>	<b>Course HOTEL</b>	<b>Course INDIA</b>	<b>Course JULIETT</b>	<b>Course ECHO</b>
10:00 then ASAP		49er Gold F7	49erFX Gold F7	Nacra Foiling R13
12:00	Nacra Theatre Final 1	49er Gold F8	49erFX Gold F8	Nacra Foiling R14
ASAP	Nacra Theatre Final 2	49erFX Silver F7	49er Silver F7	Nacra C-Foil R13
ASAP	Nacra Theatre Final 3	49erFX Silver F8	49er Silver F8	Nacra C-Foil R14
Not before 13.00	49erFX Theatre Final 1	49er Bronze F7	49erFX Bronze F7	
ASAP	49erFX Theatre Final 2	49er Bronze F8	49erFX Bronze F8	
ASAP	49erFX Theatre Final 3			
Not before 14:00	49er Theatre Final 1			
ASAP	49er Theatre Final 2			
ASAP	49er Theatre Final 3			