



MAIN COLLABORATOR:

**IBEROSTAR**  
HOTELS & RESORTS

ORGANIZERS:



COLLABORATORS:



SAIL RACE LIVE IT  
www.trofeoprincesasofia.org

29<sup>TH</sup> MARCH TO 6<sup>TH</sup> APRIL  
MALLORCA / SPAIN 2019

OFFICIAL CLOTHING SUPPLIER

## 50 TROFEO S.A.R. PRINCESA SOFIA IBEROSTAR

### SAILING INSTRUCTIONS Olympic Classes

#### 1 RULES

- 1.1 The regatta will be governed by the rules as defined in *the 2017-2020 Racing Rules of Sailing* (RRS).
- 1.2 RRS Appendix P, Special Procedures for Rule 42, will apply.
- 1.3 For medal races, World Sailing Addendum Q, *Umpired Fleet Racing*, available on the World Sailing website (<http://www.sailing.org>) will apply and takes precedence over any conflicting instructions.
- 1.4 In all rules governing this regatta:
  - 1.4.1 [SP] denotes a rule for which a standard penalty may be applied by the race committee without a hearing or a discretionary penalty applied by the International Jury with a hearing;
  - 1.4.2 [NP] denotes a rule that shall not be grounds for protests by a boat. This changes RRS 60.1(a)
- 1.5 The RFEV prescriptions do not apply.
- 1.6 Decisions of the International Jury will be final as provided in RRS 70.5.
- 1.7 If there is a conflict between languages the English text will take precedence.
- 1.8 The Equipment Regulations will apply and will be posted on the ONB of each Club as well as on the Notice Board of the event website [www.trofeoprincesasofia.org](http://www.trofeoprincesasofia.org)
- 1.9 In RRS 44.2 insert after the first sentence: However if Mark 1a is set, a boat may delay taking a penalty for an incident in the zone around Mark 1 or on the leg between Mark 1 and Mark 1a, until she has passed Mark 1a.  
For the Men's Skiff, Women's Skiff and Mixed Two Person Multihull, RRS 44.1 and RRS P2.1 are changed so that the Two-Turns Penalty is replaced by the One-Turn Penalty.
- 1.10 Appendix B, Windsurfing Competition Rules, will apply.



MAIN COLLABORATOR:

**IBEROSTAR** ★  
HOTELS & RESORTS

ORGANIZERS:



COLLABORATORS:



OFFICIAL CLOTHING SUPPLIER:



SAIL RACE LIVE IT  
www.trofeoprincesasofia.org  
29<sup>TH</sup> MARCH TO 6<sup>TH</sup> APRIL  
MALLORCA / SPAIN 2019

1.11 For Mixed Two Person Multihull, Add new Class Rule C.1.1(b)

"RRS 42.3 is amended by adding the following:

(j) Except on a beat to windward, when foiling is possible (sailing with the hull clear of the water for more than one boat length due to the effect of the hydrofoils), the boat's crew may pump the sails an unlimited number of times in order to initiate foiling."

This change to the class rule has been approved by the class association as required by RRS 87.

## 2 [DP] [NP] SAFETY REGULATIONS

2.1 The race committee will protest a boat for a breach of these safety regulations.

2.2 Competitors shall wear personal flotation devices at all times while afloat, except briefly while changing or adjusting clothing or personal equipment. RS:X competitors shall wear personal flotation devices when Flag Y is displayed.

2.3 Boats not leaving the harbour for a scheduled race shall promptly notify the Race Office.

2.4 [SP] Before leaving to race on each scheduled racing day, a crew shall personally sign out on the required race committee form located at the Race Office.

2.5 [SP] Within the protest time limit after returning ashore, a crew shall personally sign in on the required form located at the Race Office.

2.6 A boat that retires from racing shall notify the race committee before leaving the racing area, or if that is not possible, shall notify the race office as soon as possible after returning ashore.

2.7 Boats retiring from racing in accordance with SI 2.6 shall complete a retirement declaration form at the race office before the protest time limit.

2.8 In accordance with NoR 15 all boats shall return to and remain in their assigned berths.

2.9 When the race committee displays flag V with repetitive sounds, all official and support boats shall monitor VHF Race Committee channel shown in Addendum A for search and rescue instructions. For this purpose each boat is assigned at one of the areas according to the diagram of Addendum E for rescue operations. The list of assignment of the coaches to the different areas is posted on the Official Notice Board.



MAIN COLLABORATOR:



ORGANIZERS:



COLLABORATORS:



OFFICIAL CLOTHING SUPPLIER:



2.10 Boats that, for any reason, arrive ashore far from their Club and that cannot reach their assigned berths by their own means, shall promptly notify their Club, by telephone at the following numbers:

Club Nautic S’Arenal +34 971-440-142

Club Marítimo San Antonio de la Playa +34 971-745-076

### 3 [DP] CODE OF CONDUCT

3.1 [NP] Competitors shall comply with any reasonable request from a regatta official.

3.2 Boats that are on a Course Area or passing through a Course Area to which they are not assigned shall remain clear of the area where boats are racing and any official boat.

### 4 COMMUNICATIONS WITH COMPETITORS

4.1 Notices to competitors will be posted on the official notice board(s) located near the Race Office of each venue.

4.2 Notices will also be posted on the event web site <http://www.trofeoprincesasofia.org>. Failure to post a notice at these other locations will not be grounds for redress. This changes RRS 62.

4.3 When a visual signal is displayed over an area, event or fleet flag, the signal applies only to that area, event or fleet. This changes the Race Signals preamble.

4.4 Signals ashore will be displayed on the flagpole located near to the boat park in each venue.

4.5 When flag AP is displayed ashore, '1 minute' in race signal AP is replaced with the minutes indicated in the table below:

Class	Replace 1 minute with not less than
470, Laser, Laser Radial, Finn	60 minutes
Nacra 17	45 minutes
RS:X	30 minutes
49er and 49er FX	20 minutes



MAIN COLLABORATOR:



ORGANIZERS:



COLLABORATORS:



OFFICIAL CLOTHING SUPPLIER:

4.6 [NP][DP] Flag D displayed ashore with one sound means 'The warning signal will be made not less than the minutes indicated in the table below after flag D is displayed.' Boats shall not to leave their berth until this signal is made. Flag D will be displayed together with a white flag showing the number of the assigned course area.

Class	...Minutes after flag D is displayed
470, Laser, Laser Radial, Finn	60 minutes
Nacra 17	45 minutes
RS:X	30 minutes
49er and 49er FX	20 minutes

4.7 Change the course area on the water: When flag AP is displayed afloat, the course area may be changed. A race committee boat will display flag L over the Class(s) flag and move to the new Course Area.

## 5 CHANGES TO SAILING INSTRUCTIONS

5.1 Any change to the schedule of races will be posted by 2100 on the day before it will take effect and any change to the sailing instructions will be posted before 0900 on the day it will take effect.

5.2 When any SI addendum is changed, an updated version of it will be posted on the Official Notice Board as part of these sailing instructions.

## 6 FORMAT OF RACING

6.1 The format for each Olympic event consists of an opening series and a medal race stage. If the event is split into fleets, the opening series will be divided into a qualifying series and a final series.

### 6.2 Qualifying series

6.2.1 Boats will be assigned to yellow, blue and red fleets of, as nearly as possible, equal size and ability. Initial assignments will be made by a seeding committee appointed by the race committee. Those assignments will be posted by 21:00 on the day before the first scheduled race for each event.

6.2.2 Boats will be reassigned to fleets after each day of racing, except if on the first day fewer than two races are completed by all fleets. If both fleets have completed the same number of races, boats will be reassigned on the basis of their ranks in the series. If both fleets have not completed the same number of



MAIN COLLABORATOR:

**IBEROSTAR** ★  
HOTELS & RESORTS

ORGANIZERS:



COLLABORATORS:



OFFICIAL CLOTHING SUPPLIER:



SAIL RACE LIVE IT [www.trofeoprincesasofia.org](http://www.trofeoprincesasofia.org)  
29<sup>TH</sup> MARCH TO 6<sup>TH</sup> APRIL  
MALLORCA / SPAIN 2019

races, the series scores for reassignment will be calculated for those races, numbered in order of completion, completed by both fleets. Reassignments will be made as follows:

### *Rank in series Fleet assignment*

- First Yellow
- Second Blue
- Third Red
- Fourth Red
- Fifth Blue
- Sixth Yellow
- Seventh Yellow
- and so on

If two or more boats have the same rank, they will be entered in the left column in the order of fleets in SI 6.2.1.

6.2.3 Assignments will be based on the ranking available at 2100 that day regardless of protests or requests for redress not yet decided.

6.2.4 If all fleets have not completed the same number of races by the end of a day, the fleets with fewer races will continue racing the following day until all fleets have completed the same number of races. All boats will thereafter race in the new fleets.

### 6.3 Final series:

6.3.1 A final series will be scheduled for each class with 4 (5 for 49er, 49erFX and Nacra 17 Classes) or more qualifying series races completed.

6.3.2 Boats will be assigned to the gold, silver and bronze fleets on the basis of their ranks in the qualifying series. The gold Series fleets will have the number of boats shown in Addendum D. Boats with the best qualifying-series ranks will race all final-series races in the gold fleet.

6.3.3 Any recalculation of final Series ranking after boats have been assigned to gold Series fleets will not affect the assignments except that a redress decision may promote a boat to a higher fleet.

### 6.4 Medal Race Stage

6.4.1 A Medal Race Stage will be scheduled for each Olympic event with 3 or more opening series races completed. The medal race stage will be one race.

6.4.2 For events with a Medal Race Stage the ten boats ranked highest in the opening series will be assigned to compete in the medal race series.



6.4.3 Assignments to a Medal Race Stage will be based on the ranking available at 0800 on the day of the medal race series. The protest committee may extend the time limit.

6.5 The number of fleets, number of races, races per day, and the types of races are shown in SI Addendum D.

## 7 SCHEDULE OF RACES

7.1 The total number of races scheduled is shown in SI Addendum D.

7.2 The daily race schedule and the scheduled time of the warning signal for the first race are shown in SI Addendum C.

7.3 Races not sailed on the scheduled day may be sailed on a following day at the discretion of the race committee.

7.4 The opening series and the medal race series, if any, will take place as detailed in SI Addendum C.

7.5 For all classes the opening series will be extended if three races have not been completed by 5 April and the medal race series will be cancelled. For split fleet events, the qualifying series will be extended if less than four races have been completed (five for 49er, 49erFX and Nacra 17 Classes).

7.6 The warning signal for each succeeding race will be made as soon as practicable.

7.7 To alert boats that a race or sequence of races will begin soon, the orange starting line flag will be displayed with one sound at least five minutes before a warning signal is made.

7.8 On the last scheduled day of racing, no warning signal will be made after 16:30.

## 8 & 9 SPARE

## 10 COURSE AREAS

10.1 The course areas are shown in SI Addendum A.

10.2 For the medal races, three race course areas will be used. The locations will be posted on the official notice board in accordance with SI 5.1.



MAIN COLLABORATOR:



ORGANIZERS:



COLLABORATORS:



OFFICIAL CLOTHING SUPPLIER:



29<sup>TH</sup> MARCH TO 6<sup>TH</sup> APRIL MALLORCA / SPAIN 2019

## 11 THE COURSES

The diagrams in SI Addendum B show the courses, the course designations, the approximate angles between legs, the order in which marks are to be passed, and the side on which each mark is to be left.

## 12 MARKS

12.1 Marks 1, 2, 3, and 4, or associated gate marks, will be as follows:

Course Area	Marks 1, 2, 3, 4 Offset, S1, S2 and S3
1	BLUE
2	WHITE
3	RED
4	GREEN
5	ORANGE
6	YELLOW
7	YELLOW
8	RED

12.2 The starting marks will be race committee vessels or inflatable marks.

12.3 The finishing marks will be a race committee vessel and a buoy with orange flag

12.4 New marks, as provided in SI 15.1, will be black.



MAIN COLLABORATOR:



ORGANIZERS:



COLLABORATORS:



OFFICIAL CLOTHING SUPPLIER:



### 13 CLASS FLAGS

13.1 Class flags will be class insignia on the following background:

<u>Event</u>	<u>Class Insignia</u>	<u>Background Colour</u>
Men's Board	RS:X	White
Women's Board	RS:X 	Light Blue
Men's One Person Dinghy	Laser Standard	White
Women's One Person Dinghy	Laser Radial	Green
Heavyweight Men One Person Dinghy	Finn	White
Men's Skiff	49er	White
Women's Skiff	FX	White
Men's Two Person Dinghy	470	White
Women's Two Person Dinghy	470	Light Blue
Mixed Two-Person Multihull	Nacra 17	White

13.2 If event is divided to fleets, the flag fleets will be as follow:

Qualification: Yellow, Blue and Red

Final: Yellow-Gold, Blue-Silver and Red-Bronze

### 14 THE START

14.1 The starting line will be between staffs displaying orange flags on the starting marks.

14.2 [DP] A buoy may be attached to the race committee starting boat anchor line just below keel depth. Boats shall not pass between this buoy and the race committee starting boat at any time. This buoy is part of the race committee starting boat ground tackle.

14.3 [DP] When a starting sequence is in progress, boats whose warning signal has not been made shall avoid the starting area. The starting area is defined as a rectangle 50 meters from the starting line and marks in all directions.





MAIN COLLABORATOR:



ORGANIZERS:



COLLABORATORS:



## 15 COURSE CHANGES

- 15.1 To change the next leg of the course, the race committee will (a) lay a new mark, (b) move the finishing line, or (c) move the leeward gate. When a new mark is laid, the original mark will be removed as soon as possible. When in a subsequent change a new mark is replaced, it will be replaced by an original mark.
- 15.2 Courses will not be shortened. This changes RRS 32.

## 16 THE FINISH

The finishing line will be between a staff displaying an orange flag on the race committee vessel and a buoy with orange flag

## 17 TIME LIMITS AND TARGET TIMES

17.1 For opening series, time limits and target times are as follows:

Class	Time Limit	Mark 1 Time Limit	Finish Window	Target Time
470, Laser, Laser Radial	70	25	15	45
Nacra 17	50	20	10	30
49er and 49er FX	50	20	10	30
RS:X	45	20	10	20-25
Finn	70	25	15	50

17.2 For medal race, time limits and target times are as follows:

Class	Time Limit	Mark 1 Time Limit	Finish Window	Target Time
49er, 49er FX, RS:X and Nacra 17	40	10	10	20
All other classes	40	15	10	25

17.3 If no boat has passed Mark 1 within the Mark 1 Time Limit the race will be abandoned.



17.4 Boats failing to finish within the time stated in the Finish Window after the first boat sails the course and finishes will be scored Did Not Finish. This changes RRS 35, A4 and A5.

## 18 & 19 SPARE

## 20 [DP] EQUIPMENT AND MEASUREMENT CHECKS

Equipment inspection and equipment substitution will be conducted in accordance with the Equipment Regulations.

## 21 [DP] REPLACEMENT OF CREW

Substitution of competitors will not be allowed without prior written approval of the race committee and shall comply with any restrictions in the Notice of Race.

## 22 OFFICIAL BOATS

22.1 Official boats will be marked as follows:

- Equipment Inspection – White flag with letter “M”
- First aid/Medical – White flag with Red Cross
- Jury/Judges – White flag with letter “J”
- Media – White flag with letter “P”
- Organisers/VIP - White flag with letter “VIP”
- Race Committee – flags with Area Colour
- Rescue or Course Marshals - White flag with letter “S”

22.2 Actions by official boats or helicopters shall not be grounds for requesting redress by a boat. This changes RRS 60.1(b).

## 23 [DP] SUPPORT AND SPECTATOR BOATS

23.1 Addendum E - Support Boat Regulations shall apply to all support boats.

23.2 Addendum E - Support Boat Regulations Parts 4 and 5 shall also apply to spectator boats.



MAIN COLLABORATOR:



ORGANIZERS:



COLLABORATORS:



## 24 [DP] [NP] IDENTIFICATION AND ADVERTISING WHILE RACING

24.1 Boats in specified fleets shall display bow numbers. The organizing authority will supply the numbers and instructions for their use.

24.2 Boats shall display required event sponsor advertising. The organizing authority will supply the advertising and instructions for their use.

24.3 For split fleet events, boats shall display a coloured band or ribbon corresponding to the fleet to which she has been assigned. The organizing authority will supply the bands or ribbons and will be placed as follows:

Classes	Place
470 M	Not lower than the upper batten
49er - 49erFX - Nacra 17	End of the boom
Laser Std. - Laser Radial - Finn	Top of the mast

## 25 SCORING

25.1 The Low Point System shall apply to all races. RRS A4.1 is changed so that the points scored in medal races are doubled.

When fewer than three opening series races have been completed, a boat's series score will be the total of her race scores. When three or more opening series races have been completed, a boat's series score will be the total of her race scores excluding her worst score.

25.2 A boat's score shall be calculated in accordance with RRS A2, except that medal race score(s) shall be not excluded.

25.3 A boat starting later than 4 minutes after her starting signal will be scored Did Not Start. This changes RRS A4 and A5.

25.4 RRS A4.2 is changed so that those scores are based on

- (a) The number of boats assigned to compete in a single fleet series, or
- (b) The number of boats assigned to the largest fleet in a split fleet qualification series, or
- (c) The number of boats assigned to the fleet in the final series or medal stage.



25.5 Three races are required to be completed to constitute a regatta.

25.6 If at the end of the qualifying series some boats have more race scores than others, scores for the most recent races will be excluded so that all boats have the same number of race scores.

25.7 The boats competing in the medal race shall be scored highest in the regatta. The boats competing in the Gold Fleet shall be scored higher in the regatta than boats competing in the Silver fleet. This may not apply to a boat disqualified under RRS 5, 6 or 69.

25.8 RRS B8 is deleted. RRS A8 is changed as follows:

25.8.1 For boats competing in the medal stage, ties in the regatta score are broken by applying RRS A8.2 to the medal stage score(s). If a tie remains, ties in the regatta score are broken by applying RRS A8.2 to the opening series scores.

25.8.2 Ties in a split fleet opening series are broken in accordance with RRS A8.2. Ties in a split fleet qualifying series or a single fleet opening series shall be broken in accordance with RRS A8.

25.9 A boat assigned to compete in the medal race stage shall make a genuine effort to start, sail the course and finish. The penalty for a breach of this instruction will be ranking the boat tenth in the regatta. If there are two such boats, they will be ranked ninth and tenth, in order of their opening-series ranks, and so on. This changes RRS A2.

25.10 To request correction of an alleged error in posted race or series results, a boat may complete a scoring enquiry form available at the race office.

## 26 PROTESTS, PENALTIES AND REQUESTS FOR REDRESS

26.1 Protest forms are available at the race office, located near to the boat park in each venue. Protests and requests for redress or reopening shall be delivered there within the appropriate time limit.

26.2 For each fleet, the protest time limit is 90 minutes after the last boat has finished the last race of the day or the race committee signals no more racing today, whichever is later.

26.3 Notices will be posted within 30 minutes of the protest time limit to inform competitors of hearings in which they are parties or named as witnesses. Hearings will be held in the protest room, located in Club building beginning at the time posted. Hearings may be scheduled to begin up to 30 minutes before the end of protest time.



MAIN COLLABORATOR:



ORGANIZERS:



COLLABORATORS:



OFFICIAL CLOTHING SUPPLIER:



26.4 Notices of protests by the race committee, Technical Committee or protest committee will be posted to inform boats under RRS 61.1(b).

26.5 A list of boats that have been penalized under Appendix P for breaking RRS 42 and under SI 26.8 will be posted.

26.6 Penalties for breaches of the EIR, class rules, or rules in the NoR and SIs marked [DP], are at the discretion of the protest committee.

26.7 Breaches of rules in the SIs marked [NP] will not be grounds for a protest by a boat. This changes RRS 60.1(a).

26.8 For breaches of NoR 2.3 (national Flags) and the SIs marked [SP], the race committee may apply a standard penalty without a hearing.

NoR / S.I.	Standard Penalty [SP]
NoR 2.3	One point for each race of the day
SI 2.4	One point in the first race of the day
SI 2.5	One point in the last race of the day

However, the race committee may protest a boat when they consider the standard penalty to be inappropriate. This changes RRS 63.1 and Appendix A5.

26.9 On the last day of the qualifying series, opening series, or on the last scheduled day of racing, a request for reopening a hearing shall be delivered

- (a) Within the protest time limit if the requesting party was informed of the decision on the previous day;
- (b) No later than 30 minutes after the requesting party was informed of the decision on that day;

This changes RRS 66.

26.10 On the last day of the qualifying series or opening series, or on the last scheduled day of racing, a request for redress based on a jury decision shall be delivered no later than 30 minutes after the decision was posted. This changes RRS 62.2.



MAIN COLLABORATOR:

**IBEROSTAR**  
HOTELS & RESORTS

ORGANIZERS:



COLLABORATORS:



SAIL RACE LIVE IT  
www.trofeoprincesasofia.org  
29<sup>TH</sup> MARCH TO 6<sup>TH</sup> APRIL  
MALLORCA / SPAIN 2019

OFFICIAL CLOTHING SUPPLIER:

## 27 [DP] RADIO COMMUNICATIONS

A boat shall neither make radio transmissions while racing nor receive radio communications not available to all boats, except in an emergency or when using equipment provided by the race committee. This restriction also applies to mobile telephones.

## 28 [DP] TRASH DISPOSAL

As sailors, we seek to protect and restore our oceans and coastal waters. See RRS 55. Boats shall not intentionally put trash in the water. Trash may be placed aboard support and race committee boats.

## 29 PRIZES

29.1 Prizes will be awarded to the top 3 boats in each event. EUROSAP medals will be awarded to the top three teams in each Olympic Class.

### 29.2 TROFEO SAR PRINCESA SOFIA ABSOLUTE WINNER

The winner of each class of the 50 Trofeo SAR Princesa Sofia is eligible for the Trophy as long as the following requirements are fulfilled:

- 29.2.1 Only the winner of each event is eligible for the Trophy, provided that in the event there is a minimum of 25 entries from 2 different continents and representing 8 different WS Member National Authorities.
- 29.2.2 The winner will be the boat with the lowest average points after dividing the total points in the regatta series by the number of race completed (including any discard).
- 29.2.3 If there is a tie between two or more boat, it will be broken by applying RRS A8.1, except that excluded scores shall be used. Any remaining tie shall be solved in favour of the boat with a higher number of entries in her event.

CHANGE  
WAVE



MAIN COLLABORATOR:

IBEROSTAR  
HOTELS & RESORTS

ORGANIZERS:



COLLABORATORS:



OFFICIAL CLOTHING SUPPLIER



SAIL RACE LIVE IT

www.trofeoprincesasofia.org

29<sup>TH</sup> MARCH TO 6<sup>TH</sup> APRIL  
MALLORCA / SPAIN 2019

## ADDENDUM A - COURSE AREAS



**NOT TO SCALE**

CHANGE  
WAVE



MAIN COLLABORATOR:

**IBEROSTAR** ★  
HOTELS & RESORTS

ORGANIZERS:



COLLABORATORS:



OFFICIAL CLOTHING  
SUPPLIER



SAIL RACE LIVE **IT**  
www.trofeoprincesasofia.org  
29<sup>TH</sup> MARCH TO 6<sup>TH</sup> APRIL  
MALLORCA / SPAIN 2019



<b>VHF CHANNELS</b>	
<b>COURSE AREA</b>	<b>VHF CHANNEL</b>
<b>1</b>	<b>68</b>
<b>2</b>	<b>69</b>
<b>3</b>	<b>73</b>
<b>4</b>	<b>77</b>
<b>5</b>	<b>74</b>
<b>6</b>	<b>13</b>
<b>7</b>	<b>11</b>
<b>8</b>	<b>71</b>





MAIN COLLABORATOR:

**IBEROSTAR**  
HOTELS & RESORTS

ORGANIZERS:



COLLABORATORS:



OFFICIAL CLOTHING SUPPLIER:



SAIL RACE LIVE IT  
www.trofeoprincesasofia.org  
29<sup>TH</sup> MARCH TO 6<sup>TH</sup> APRIL  
MALLORCA / SPAIN 2019

CLUB NAUTICO ARENAL				
1 (Purple Area)	2 (Brown Area)	3 (White Area)	4 (Green Area)	6 (Red Area)
49er	49er FX	RS:X	FINN	470 – M / W
<b>Area Centre:</b> 39° 30, 200' N 002° 43, 850' E	<b>Area Centre:</b> 39°29,250' N 002° 42, 900' E	<b>Area Centre:</b> 39° 31, 180' N 002° 42, 650' E	<b>Area Centre:</b> 39° 30, 080' N 002°41,700' E	<b>Area Centre:</b> 39° 30,900' N 002° 40,600' E
<b>Area Diameter:</b> 1.20 nm	<b>Area Diameter:</b> 1.20 nm	<b>Area Diameter:</b> 1.20 nm	<b>Area Diameter:</b> 1.20 nm	<b>Area Diameter:</b> 1.20 nm

CLUB MARITIMO SAN ANTONIO DE LA PLAYA		
5 (Pink Area)	7 (Yellow Area)	8 (Light Blue Area)
Nacra 17	Laser RADIAL	Laser STANDARD
<b>Area Centre:</b> 39° 32,000' N 002° 41,300' E	<b>Area Centre:</b> 39° 32,770' N 002° 39,800' E	<b>Area Centre:</b> 39° 31,500' N 002° 39,300' E
<b>Area Diameter:</b> 1.20 nm	<b>Area Diameter:</b> 1.20 nm	<b>Area Diameter:</b> 1.20 nm



MAIN COLLABORATOR:



ORGANIZERS:



COLLABORATORS:



OFFICIAL CLOTHING SUPPLIER:



SAIL RACE LIVE IT

www.trofeoprincesasofia.org

29<sup>TH</sup> MARCH TO 6<sup>TH</sup> APRIL  
MALLORCA / SPAIN 2019

## ADDENDUM B - COURSE ILLUSTRATIONS

<p><b>Course: Inner Trapezoid</b></p> <table border="1"> <thead> <tr> <th>Signal</th> <th>Mark Rounding Order</th> </tr> </thead> <tbody> <tr> <td>I2</td> <td>Start - 1 - 4s/4p - 1 - 2 - 3p - Finish</td> </tr> <tr> <td>I3</td> <td>Start - 1 - 4s/4p - 1 - 4s/4p - 1 - 2 - 3p - Finish</td> </tr> <tr> <td>I4</td> <td>Start - 1 - 4s/4p - 1 - 4s/4p - 1 - 4s/4p - 1 - 2 - 3p - Finish</td> </tr> </tbody> </table>	Signal	Mark Rounding Order	I2	Start - 1 - 4s/4p - 1 - 2 - 3p - Finish	I3	Start - 1 - 4s/4p - 1 - 4s/4p - 1 - 2 - 3p - Finish	I4	Start - 1 - 4s/4p - 1 - 4s/4p - 1 - 4s/4p - 1 - 2 - 3p - Finish	<p><b>Course: Outer Trapezoid</b></p> <table border="1"> <thead> <tr> <th>Signal</th> <th>Mark Rounding Order</th> </tr> </thead> <tbody> <tr> <td>O2</td> <td>Start - 1 - 2 - 3s/3p - 2 - 3p - Finish</td> </tr> <tr> <td>O3</td> <td>Start - 1 - 2 - 3s/3p - 2 - 3s/3p - 2 - 3p - Finish</td> </tr> <tr> <td>O4</td> <td>Start - 1 - 2 - 3s/3p - 2 - 3s/3p - 2 - 3s/3p - 2 - 3p - Finish</td> </tr> </tbody> </table>	Signal	Mark Rounding Order	O2	Start - 1 - 2 - 3s/3p - 2 - 3p - Finish	O3	Start - 1 - 2 - 3s/3p - 2 - 3s/3p - 2 - 3p - Finish	O4	Start - 1 - 2 - 3s/3p - 2 - 3s/3p - 2 - 3s/3p - 2 - 3p - Finish
Signal	Mark Rounding Order																
I2	Start - 1 - 4s/4p - 1 - 2 - 3p - Finish																
I3	Start - 1 - 4s/4p - 1 - 4s/4p - 1 - 2 - 3p - Finish																
I4	Start - 1 - 4s/4p - 1 - 4s/4p - 1 - 4s/4p - 1 - 2 - 3p - Finish																
Signal	Mark Rounding Order																
O2	Start - 1 - 2 - 3s/3p - 2 - 3p - Finish																
O3	Start - 1 - 2 - 3s/3p - 2 - 3s/3p - 2 - 3p - Finish																
O4	Start - 1 - 2 - 3s/3p - 2 - 3s/3p - 2 - 3s/3p - 2 - 3p - Finish																
<p><b>Course: Inner Slalom</b></p> <table border="1"> <thead> <tr> <th>Signal</th> <th>Mark Rounding Order</th> </tr> </thead> <tbody> <tr> <td>IS2</td> <td>Start - 1 - 4s/4p - 1 - 2 - 3p - S1 - S2 - S3 - Finish</td> </tr> <tr> <td>IS3</td> <td>Start - 1 - 4s/4p - 1 - 4s/4p - 1 - 2 - 3p - S1 - S2 - S3 - Finish</td> </tr> <tr> <td>IS4</td> <td>Start - 1 - 4s/4p - 1 - 4s/4p - 1 - 4s/4p - 1 - 2 - 3p - S1 - S2 - S3 - Finish</td> </tr> </tbody> </table>	Signal	Mark Rounding Order	IS2	Start - 1 - 4s/4p - 1 - 2 - 3p - S1 - S2 - S3 - Finish	IS3	Start - 1 - 4s/4p - 1 - 4s/4p - 1 - 2 - 3p - S1 - S2 - S3 - Finish	IS4	Start - 1 - 4s/4p - 1 - 4s/4p - 1 - 4s/4p - 1 - 2 - 3p - S1 - S2 - S3 - Finish	<p><b>Course: Outer Slalom</b></p> <table border="1"> <thead> <tr> <th>Signal</th> <th>Mark Rounding Order</th> </tr> </thead> <tbody> <tr> <td>OS2</td> <td>Start - 1 - 2 - 3s/3p - 2 - 3p - S1 - S2 - S3 - Finish</td> </tr> <tr> <td>OS3</td> <td>Start - 1 - 2 - 3s/3p - 2 - 3s/3p - 2 - 3p - S1 - S2 - S3 - Finish</td> </tr> <tr> <td>OS4</td> <td>Start - 1 - 2 - 3s/3p - 2 - 3s/3p - 2 - 3s/3p - 2 - 3p - S1 - S2 - S3 - Finish</td> </tr> </tbody> </table>	Signal	Mark Rounding Order	OS2	Start - 1 - 2 - 3s/3p - 2 - 3p - S1 - S2 - S3 - Finish	OS3	Start - 1 - 2 - 3s/3p - 2 - 3s/3p - 2 - 3p - S1 - S2 - S3 - Finish	OS4	Start - 1 - 2 - 3s/3p - 2 - 3s/3p - 2 - 3s/3p - 2 - 3p - S1 - S2 - S3 - Finish
Signal	Mark Rounding Order																
IS2	Start - 1 - 4s/4p - 1 - 2 - 3p - S1 - S2 - S3 - Finish																
IS3	Start - 1 - 4s/4p - 1 - 4s/4p - 1 - 2 - 3p - S1 - S2 - S3 - Finish																
IS4	Start - 1 - 4s/4p - 1 - 4s/4p - 1 - 4s/4p - 1 - 2 - 3p - S1 - S2 - S3 - Finish																
Signal	Mark Rounding Order																
OS2	Start - 1 - 2 - 3s/3p - 2 - 3p - S1 - S2 - S3 - Finish																
OS3	Start - 1 - 2 - 3s/3p - 2 - 3s/3p - 2 - 3p - S1 - S2 - S3 - Finish																
OS4	Start - 1 - 2 - 3s/3p - 2 - 3s/3p - 2 - 3s/3p - 2 - 3p - S1 - S2 - S3 - Finish																



MAIN COLLABORATOR:



ORGANIZERS:



COLLABORATORS:



OFFICIAL CLOTHING SUPPLIER



SAIL RACE LIVE IT  
www.trofeoprincesasofia.org  
29<sup>TH</sup> MARCH TO 6<sup>TH</sup> APRIL  
MALLORCA / SPAIN 2019

**L**

Course: Windward/Leeward

Signal	Mark Rounding Order
L2	Start - 1 - 4s/4p - 1 - Finish
L3	Start - 1 - 4s/4p - 1 - 4s/4p - 1 - Finish
L4	Start - 1 - 4s/4p - 1 - 4s/4p - 1 - 4s/4p - 1 - Finish

**LS**

Course: Windward/Leeward With Slalom Finish

Signal	Mark Rounding Order
LS2	Start - 1 - 2s/2p - 1 - 2p - S1 - S2 - S3 - Finish
LS3	Start - 1 - 2s/2p - 1 - 2s/2p - 1 - 2p - S1 - S2 - S3 - Finish
LS4	Start - 1 - 2s/2p - 1 - 2s/2p - 1 - 2s/2p - 1 - 2p - S1 - S2 - S3 - Finish

**LG**

Course: Windward/Leeward

Signal	Mark Rounding Order
LG2	Start - 1 - 4s/4p - 1 - 4s - Finish
LG3	Start - 1 - 4s/4p - 1 - 4s/4p - 1 - 4s - Finish
LG4	Start - 1 - 4s/4p - 1 - 4s/4p - 1 - 4s/4p - 1 - 4s - Finish

**LR**

Course: Windward/Leeward

Signal	Mark Rounding Order
LR2	Start - 1 - 4s/4p - 1 - 4p - Finish
LR3	Start - 1 - 4s/4p - 1 - 4s/4p - 1 - 4p - Finish
LR4	Start - 1 - 4s/4p - 1 - 4s/4p - 1 - 4s/4p - 1 - 4p - Finish



MAIN COLLABORATOR:

**IBEROSTAR**  
HOTELS & RESORTS

ORGANIZERS:



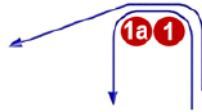
COLLABORATORS:



OFFICIAL CLOTHING SUPPLIER



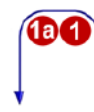
**IA**



Course: Same As Course I Except With Offset Mark 1A

Signal	Mark Rounding Order
<b>IA2</b>	Start - 1 - 1a - 4s/4p - 1 - 1a - 2 - 3p - Finish
<b>IA3</b>	Start - 1 - 1a - 4s/4p - 1 - 1a - 4s/4p - 1 - 1a - 2 - 3p - Finish
<b>IA4</b>	Start - 1 - 1a - 4s/4p - 1 - 1a - 4s/4p - 1 - 1a - 4s/4p - 1 - 1a - 2 - 3p - Finish

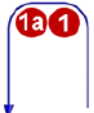
**LGA**



Course: Same As Course LG Except With Offset Mark 1A

Signal	Mark Rounding Order
<b>LGA2</b>	Start - 1 - 1a - 4s/4p - 1 - 1a - 4s - Finish
<b>LGA3</b>	Start - 1 - 1a - 4s/4p - 1 - 1a - 4s/4p - 1 - 1a - 4s - Finish
<b>LGA4</b>	Start - 1 - 1a - 4s/4p - 1 - 1a - 4s/4p - 1 - 1a - 4s/4p - 1 - 1a - 4s - Finish

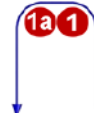
**LA**



Course: Same As Course L Except With Offset Mark 1A

Signal	Mark Rounding Order
<b>LA2</b>	Start - 1 - 1a - 4s/4p - 1 - 1a - Finish
<b>LA3</b>	Start - 1 - 1a - 4s/4p - 1 - 1a - 4s/4p - 1 - 1a - Finish
<b>LA4</b>	Start - 1 - 1a - 4s/4p - 1 - 1a - 4s/4p - 1 - 1a - 4s/4p - 1 - 1a - Finish

**LRA**



Course: Same As Course LR Except With Offset Mark 1A

Signal	Mark Rounding Order
<b>LRA2</b>	Start - 1 - 1a - 4s/4p - 1 - 1a - 4p - Finish
<b>LRA3</b>	Start - 1 - 1a - 4s/4p - 1 - 1a - 4s/4p - 1 - 1a - 4p - Finish
<b>LRA4</b>	Start - 1 - 1a - 4s/4p - 1 - 1a - 4s/4p - 1 - 1a - 4s/4p - 1 - 1a - 4p - Finish



MAIN COLLABORATOR:



ORGANIZERS:



SAIL RACE LIVE IT www.trofeoprincesasofia.org  
29<sup>TH</sup> MARCH TO 6<sup>TH</sup> APRIL  
MALLORCA / SPAIN 2019

COLLABORATORS:



OFFICIAL CLOTHING SUPPLIER:



## ADDENDUM C - SCHEDULE OF RACES

50 TROFEO S.A.R. PRINCESA SOFIA IBEROSTAR	Time of 1 <sup>st</sup> warning signal (hrs) and scheduled number races (#) by day								
	Mon 1	Tue 2	Wed 3	Thu 4	Fri 5	Sat 6			
	TIME #	TIME #	TIME #	TIME #	TIME #	TIME #	TIME		
Men's Windsurfer	1100 2	1100 2	1100 2	1100 2	1100 2	1100 2	TBA	Medal	
Women's Windsurfer	1100 2	1100 2	1100 2	1100 2	1100 2	1100 2	TBA	Medal	
Men's Two Person Dinghy	1100 2	1100 2	1100 2	1100 2	1100 2	1100 2	TBA	Medal	
Women's Two Person Dinghy	1100 2	1100 2	1100 2	1100 2	1100 2	1100 2	TBA	Medal	
Heavyweight Men's One Person Dinghy	1100 2	1100 2	1100 2	1100 2	1100 2	1100 2	TBA	Medal	
Men's One Person Dinghy	1100 2	1100 2	1100 2	1100 2	1100 2	1100 2	TBA	Medal	
Women's One Person Dinghy	1100 2	1100 2	1100 2	1100 2	1100 2	1100 2	TBA	Medal	
Men's Skiff	1300 3	1100 3	1300 3	1100 3	1300 3	1100 3	TBA	Medal	
Women's Skiff	1100 3	1300 3	1100 3	1300 3	1100 3	1100 3	TBA	Medal	
Mixed Two Person Multihull	1100 3	1100 3	1100 3	1100 3	1100 3	1100 3	TBA	Medal	



MAIN COLLABORATOR:



ORGANIZERS:



COLLABORATORS:



OFFICIAL CLOTHING SUPPLIER:



## ADDENDUM D - FORMAT

See SI 6 for the description of formats; see SI 25 for the description of scoring systems.

Course assignments, number of fleets, maximum number of boats in gold fleets and total number of races.

50 TROFEO S.A.R. PRINCESA SOFIA	Number of fleets	Number of Boats in the Gold Fleet	Total Number of Races
Men's Windsurfer	2	50%	11
Women's Windsurfer	1	N/A	11
Men's Two Person Dinghy	2	50%	11
Women's Two Person Dinghy	1	N/A	11
Heavyweight Men's One Person Dinghy	2	50%	11
Men's One Person Dinghy	3	Equal size	11
Women's One Person Dinghy	2	50%	11
Men's Skiff	3	25	16
Women's Skiff	2	25	16
Mixed Two Person Multihull	2	50%	16



MAIN COLLABORATOR:

**IBEROSTAR** ★  
HOTELS & RESORTS

ORGANIZERS:



COLLABORATORS:



OFFICIAL CLOTHING SUPPLIER:



SAIL RACE LIVE IT  
www.trofeoprincesasofia.org  
29<sup>TH</sup> MARCH TO 6<sup>TH</sup> APRIL  
MALLORCA / SPAIN 2019

## ADDENDUM E.- Coach Boat Regulations

### 1. General

- 1.1. These Coach Boat Regulations (CBR) shall apply from 09:00 on Saturday 30th March until 18:00 on Saturday 6<sup>th</sup> April.
- 1.2. For the purposes of these regulations, a coach boat includes any boat that is under the control or direction of a person who is or may provide physical or advisory support to an athlete, including the gathering of data that may be used at a later time.
- 1.3. The Organizing Authority may inspect boats at any time to ensure that they comply with these regulations, and the person responsible for the boat shall facilitate such inspection.
- 1.4. An alleged breach of any of these regulations may be referred to the International Jury for a hearing. As a result of the hearing, the International Jury may instruct the Organizing Authority to withdraw accreditation and access rights from the offending party, with or without the option of substitution, either for a specified period or for the remainder of the competition. Note also, action may be taken under RRS 69.
- 1.5. The Organizing Authority may change these regulations at any time. Any changes will be posted on the Official Noticeboard and circulated to team leaders.
- 1.6. The Organizing Authority may, at its discretion, refuse to register coach boats not deemed to be suitable. Generally, open boats more than 4.0m and less than 7.5m in length and having minimal or no superstructure (cabin, coach house, bridge, etc) are considered suitable.
- 1.7. Coach boats and designated drivers shall be registered at the Regatta Office either before leaving the venue by water for the first time or by 18:00 on the day before the first race of the Event that it is supporting, whichever is earlier.
  - 1.7.1. Each boat shall be insured with valid third-party liability insurance with a minimum coverage of € 300.000 (or equivalent) per incident.
  - 1.7.2. Only an accredited coach may be a designated driver.
  - 1.7.3. The person registering the coach boat shall sign to confirm that:
    - he / she holds a valid insurance certificate showing proof of third-party liability coverage as required by 1.7.1;
    - the designated driver has a motorboat driving licence recognised by a national authority appropriate to that boat; and



MAIN COLLABORATOR:

**IBEROSTAR** ★  
HOTELS & RESORTS

ORGANIZERS:



COLLABORATORS:



OFFICIAL CLOTHING SUPPLIER:



SAIL RACE LIVE IT  
www.trofeoprincesasofia.org  
29<sup>TH</sup> MARCH TO 6<sup>TH</sup> APRIL  
MALLORCA / SPAIN 2019

- anyone who will be using a radio has an appropriate radio operation licence recognised by a national authority.

## 1.8. Coach boats shall be marked as follows:

1.8.1. The three-letter NOC code shall be clearly displayed on both sides of the boat in strongly contrasting colours at all times while afloat. The minimum height for the letters shall be 200mm. The letters will not be provided by the Organising Authority.

1.8.2. A rib identification sticker provided by the Organising Authority

## 2. Sailing Venue

2.1. Coach boats shall use the designated slipway/area for launching. Once launched, trailers shall be moved immediately to the trailer park or as otherwise directed by the Organizing Authority.

2.2. Only coach boats that will be registered will be allowed into the sailing venue.

2.3. When not in use, coach boats shall be appropriately berthed at the sailing venue in the allocated areas for coach boats for the entire time that these CBR apply.

2.4. Coach boats shall not use the dinghy launching slipways or keelboat pontoons for any purpose whatsoever, including mooring, launching and retrieval, and loading and unloading of equipment.

## 3. Safety

3.1. Coach boats shall carry on board:

- life jackets / buoyancy aid for all passengers and the driver (it is recommended that they are worn at all times when afloat);
- first-aid kit;
- VHF radio;
- device for making a sound signal;
- compass;
- adequate anchor and tackle for conditions and depth;
- tow rope (minimum 15m long and 10mm thick);
- operational engine kill cord (also known as a safety lanyard or automatic engine immobiliser);
- knife

3.2. It is strongly recommended that the kill cord is used at all times when the engine is running.

3.3. Coach boats shall never exceed maximum plated / certified passenger limits.





MAIN COLLABORATOR:

**IBEROSTAR** ★  
HOTELS & RESORTS

ORGANIZERS:



COLLABORATORS:



OFFICIAL CLOTHING SUPPLIER:



SAIL RACE LIVE IT [www.trofeoprincesasofia.org](http://www.trofeoprincesasofia.org)  
29<sup>TH</sup> MARCH TO 6<sup>TH</sup> APRIL  
MALLORCA / SPAIN 2019

- 3.4. Team leaders are responsible for overseeing the safety of their coach boats on the water, including knowledge of who is afloat and ensuring their safe return to the venue.
- 3.5. At all times, the registered driver(s) of a coach boat shall comply with directions given by a Race Official. In particular, this includes assisting in rescue operations when requested to do so.
- 3.6. Coach boats shall comply with local harbour and marina regulations, in particular speed limits.

#### 4. General restrictions

- 4.1. The registered driver(s) of a coach boat will be responsible for the control of the boat at all times and will be held responsible for any inappropriate behaviour, dangerous actions or improper practices, or actions affecting the fairness or safety of competition.
- 4.2. Coach boats shall not leave any device, piece of equipment, buoy, marker or similar item permanently in the water. Temporary use of floating objects is allowed for current measurement. These objects shall be removed as soon as the measurement has been taken.
- 4.3. Coach boats should take particular care to minimise their wash when transiting the course areas.

#### 5. Coach Boat Zone

- 5.1. Coach Boats shall not be positioned:
  - i. Closer than 50 metres of any boat racing
  - ii. Within 50 meters of the starting line and marks from the time of the preparatory signal until all boats have left the starting area, or the race committee signals a postponement, general recall or abandonment.
  - iii. Between any boat racing and the next mark of the course.
  - iv. Between the inner and outer trapezoid courses when boats are racing on both courses.
  - v. Within 50 meters of any mark of the course while boats are in the vicinity of that mark.
  - vi. Within 50 meters of the finishing line and marks while boats are finishing.
- 5.2. In addition, support boats that are motoring above 5 knots shall remain at least 150 meters from any boat racing.
- 5.3. Additional restrictions apply to medal races and will be posted on the official notice board.

CHANGE  
WAVE



MAIN COLLABORATOR:

**IBEROSTAR** ★  
HOTELS & RESORTS

ORGANIZERS:



COLLABORATORS:



OFFICIAL CLOTHING SUPPLIER:



SAIL RACE LIVE **IT**

www.trofeoprincesasofia.org

29<sup>TH</sup> MARCH TO 6<sup>TH</sup> APRIL  
MALLORCA / SPAIN 2019

#### 5.4 Diagram assigned areas according SI 2.9

