



VOLVO

49er, 49erFX & NACRA 17

EUROPEAN CHAMPIONSHIP

GREAT BRITAIN 2019

49er, 49erFX and Nacra17

European Championships

Weymouth and Portland, UK

10th to 19th May 2019

The Organising Authority is the Royal Yachting Association in conjunction with the International 49er and Nacra 17 Class Associations and Weymouth and Portland National Sailing Academy

SAILING INSTRUCTIONS

[NP] denotes a rule that shall not be grounds for protests by a boat. This changes RRS 60.1(a).

[DP] denotes a rule for which the penalty is at the discretion of the International Jury.

[SP] denotes a rule for which a standard penalty may be applied by the race committee without a hearing or a discretionary penalty applied by the International Jury with a hearing

1. RULES

1.1 The regatta will be governed by the rules as defined in *The Racing Rules of Sailing*.

1.2 RRS Appendix P, *Special Procedures for Rule 42*, will apply as amended by SI 17.2.

1.3 For the Medal Races, World Sailing Addendum Q (as posted on the official notice board) takes precedence over any conflicting instructions.

1.4 The Class and Championship Rules of the International 49er and Nacra 17 Class Associations will apply except for any that are altered by the Notice of Race or the Sailing Instructions.

1.5 The RYA National Authority Prescriptions will apply as included in the Notice of Race.

1.6 If there is a conflict between languages the English text will take precedence.

1.7 [DP] Penalties for breaches of RRS 41, the Class Rules or the Equipment Inspection Regulations are at the discretion of the International Jury.

1.8 For 49er and 49erFX - the bottom two panels of the jib area shall be restricted to Class and Event advertising and all competitors shall place class nominated

branding on their jibs according to the World Sailing approved 49er Class jib advertising policy.

For Nacra 17 - the area of the jib, except for the visibility window, shall be restricted to Class and Event advertising and all competitors shall place class nominated branding on their jibs according to the World Sailing approved Nacra 17 Class jib advertising policy

1.9 This is a World Sailing ranking 100 point event

2. IDENTIFICATION [DP][NP][SP]

2.1 Boats (49ers, 49er FX and Nacra 17) will be required to affix the boom stickers provided by the Organising Authority on both sides of the boom. Boats shall affix the stickers in accordance with any instructions given by the Organising Authority.

2.2 [SP] From Tuesday 14 May onwards, each day while racing, the sailors of the first, second and third boats in series ranking at the beginning of the day shall wear yellow, blue and red lycra bibs respectively. These jerseys will be available at the Race Office each day from two hours before the first scheduled warning signal of the day and shall be returned by competitors as soon as possible after the days racing.

3. CAMERAS AND ELECTRONIC EQUIPMENT [NP]

3.1 Boats may be required to carry on board cameras, sound equipment or positioning equipment as specified by the Organising Authority. Competitors may also use their own camera recording equipment and attachments, but these are to be removable for weighing. A boat shall not be given redress based on a claim involving this equipment. This changes RRS 62.1

3.2 [DP][SP][NP] The Organising Authority may supply GPS tracking units for use during the Qualifying Series, the Fleet Racing Series and the Medal Races. Boats shall carry these GPS units whilst racing. The GPS units shall be picked up every morning from the Race Office before going afloat and shall be returned to the Race Office no later than the end of protest time.

3.3 No competitor or support team shall use a drone over the racing area.

4. NOTICES TO COMPETITORS

Notices to competitors will be posted on the Official Notice Board located in the Event Marquee.

5. CHANGES TO SAILING INSTRUCTIONS

Any change to the sailing instructions will be posted not less than two hours before the scheduled warning signal on the day it will take effect, except that any change to the timing of races, will be posted by 2000 the day before it will take effect. Up to FOUR races a day may be sailed without the need for a change in Sailing Instructions.

6. SIGNALS MADE ASHORE

6.1 Signals made ashore will be displayed at the official flagpole located on the balcony outside the Race Office. When a signal is displayed over a fleet flag, it applies to that fleet only.

6.2 [DP][NP][SP] Flag D displayed ashore with one sound signal this means: “the warning signal will be made not less than 60 minutes after flag D is displayed for boats racing in Weymouth Bay and 30 minutes for boats racing in Portland Harbour or not before the scheduled time, whichever is later. Boats shall not leave their allocated berth until this signal is made”.

7. SCHEDULE OF EVENTS

- | | | | |
|-----|--------------------------|-------------|--|
| 7.1 | Saturday 4 May | 1900 | Coaches and Sailors First Aid and Safety Seminar |
| | Wednesday 8 May | 1700 | Beach clean |
| | Friday 10 May | 0900 - 1800 | Registration/Inspection |
| | | 1800 | Nacra 17 Class EGM |
| | | 1900 | Nacra 17 Open Class Forum |
| | Saturday 11 May | 0900 - 1800 | Registration/Inspection |
| | | 1900 | 49er Open Class Forum |
| | Day 0 - Sunday 12 May | 0900 - 1100 | Registration/Inspection |
| | | 1255 | Practice Races |
| | | 1730 | Competitors Meeting / Safety Briefing |
| | | 1800 | Opening Ceremony |
| | Day 1 - Monday 13 May | 1055 | Qualifying Races |
| | Day 2 - Tuesday 14 May | 1055 | Qualifying Races |
| | Day 3 - Wednesday 15 May | 1055 | Qualifying Races |
| | Day 4 - Thursday 16 May | 1055 | Flexible day |
| | Day 5 - Friday 17 May | 1055 | Fleet Races |
| | Day 6 - Saturday 18 May | 1055 | Fleet Races |
| | Day 7 - Sunday 19 May | 0955 | Fleet Races |
| | | 1500 | Medal Races |
| | | | Prize Giving and Closing Ceremony as soon as possible after the Medal Races |
- 7.2 On Sunday 19 May there will be no warning signal after 1600 for those taking part in the Final Fleet Races and after 1800 for those taking part in the Medal Races.
- 7.3 There will be an informal meeting with the PRO for the coaches at 0900 each morning from Tuesday 14 May in Spinnakers.

8. FORMAT OF RACING - QUALIFYING SERIES, FLEET RACING SERIES AND MEDAL RACE

The regatta will consist of an Opening Series and a Medal Race. The Opening Series will be divided into a Qualifying Series and a Fleet Racing Series. These races are as described in Attachment C. The provisional racing schedule is described in Attachment D

9. CLASS FLAGS

- 9.1 In the Qualifying Series, for 49er the class flag will be the class insignia on a background of the colour of the appropriate fleet, yellow, blue or red. For 49erFX and Nacra 17 the class flag will be the class insignia on a background of yellow or blue.
- 9.2 In the Fleet Racing Series, the class flags will be the 49er class insignia on a background of yellow (gold fleet), blue (silver fleet) and red (bronze fleet), for 49erFX and Nacra 17 the class insignia on a background of yellow (gold fleet) and blue (silver fleet).
- 9.3 In the Medal Races, the class flags will be the class insignia on a background of yellow.

10. RACING AREAS

- 10.1 Attachment B shows the location of the race area.
- 10.2 Assignment of fleets to racing areas will be as Attachment D unless amended as in SI 5 and will be posted before flag D is displayed, see SI 6.2.
- 10.3 [DP][NP] Boats not racing shall not sail in the course area being used by another

fleet.

11. THE COURSES

- 11.1 Attachment A shows the course to be sailed, the order in which the marks are to be passed, the side on which each mark is to be left, and the signals indicating the number of rounds to be sailed.
- 11.2 No later than the warning signal, the race committee signal vessel will display the course and the approximate compass bearing from the race committee signal vessel to Mark 1.
- 11.3 There will be a gate at the leeward marks and Nacra 17 will have a spreader mark at the windward mark.
- 11.4 A gate may be replaced by a single mark to be left to port

12. MARKS

Pink course

All marks.....Pink cylinders
Change markRed cylinder with black band

Black course

All marksBlack cylinders
Change mark.....Red cylinder with orange band

Red course

All marksRed cylinders
Change markBlue cylinder with black band

Yellow course

All marksYellow cylinders
Change markRed cylinder with blue band

Starting marks.....Race Committee vessels
Finishing marks.....Race Committee vessels

13. THE START

- 13.1 The starting line will be between staffs displaying orange flags on the starting marks.
- 13.2 [DP][NP] Boats whose warning signal has not been made shall avoid the starting area.
- 13.3 A boat starting later than four minutes after her starting signal will be scored Did Not Start. This changes RRS A4 and A5.
- 13.4 To alert boats that a race or sequence of races will begin soon, the orange starting line flag will be displayed with ONE sound signal not less than TWO minutes before the warning signal is displayed.

14. CHANGE OF THE NEXT LEG OF THE COURSE

- 14.1 To change the next leg of the course, the race committee will lay a change mark, which will be as detailed in SI 12. When a new mark is laid, the original mark will be removed as soon as possible.
- 14.2 For Nacra 17 only - if the windward mark is changed a new spreader mark will not be laid

15. THE FINISH

- 15.1 The finishing line will be between staffs displaying orange flags on the finishing marks.
- 15.2 For Nacra 17 only - [DP][SP] When the blue finishing flag is displayed on the main committee vessel NO boats shall enter the Finishing Exclusion Zone other than

boats that are finishing who shall leave the zone immediately. See Attachment E

16. TIME LIMITS

- 16.1 For the Qualifying Series and the Fleet Racing Series the time limits and target times are as follows:
Time limit.....45 minutes
Finish window.....15 minutes
For Nacra 17 only in winds averaging less than 10 knots the Finishing window is increased to 20 minutes
Target time.....30 minutes or as described in Appendix C
- 16.2 For the Medal Races the time limits and target times are as follows:
Time limit.....30 minutes
Finish window.....10 minutes
Target time.....20 minutes
- 16.3 Boats failing to finish within the Finish Window (the time after the first boat sails the course and finishes) will be scored Did Not Finish without a hearing. This changes RRS 35, A4 and A5.

17. PENALTY SYSTEM

- 17.1 Appendix P, *Special Procedures for Rule 42* will apply, as changed by SI 17.2
- 17.2 RRS 44.1 and RSS P2.1 are changed so that the Two-Turns penalty is replaced by a One-Turn penalty.
- 17.3 Penalties for breaches of NOR 17 (Insurance), NOR 19 (Media Rights), the ER, Class Rules and rules in the Notice of Race and Sailing Instructions marked [DP], are at the discretion of the International Jury.
- 17.4 Breaches of rules in the SIs marked [NP] will not be grounds for a protest by a boat. This changes RRS 60.1(a).
- 17.5 For breaches of the SIs marked [SP], the race committee may apply a standard penalty without a hearing. A list of these breaches and the associated standard penalties will be posted on the Official Notice Board. However, the race committee may protest a boat when they consider the standard penalty to be inappropriate. A boat that has been penalised with a standard penalty can neither be protested for the same incident by another boat nor can another boat request redress for this race committee action. This changes RRS 60.1, 63.1 and Appendix A5.

18. PROTESTS AND REQUESTS FOR REDRESS

- 18.1 Protest forms are available at the Race Office located in Rooms 5 and 6 of the WPNSA building. Protests and requests for redress or reopening shall be delivered there within the protest time limit.
- 18.2 The protest time limit will be posted on the Official Notice Board located in the Event Marquee. The protest time limit will be 60 minutes after the last boat of each class has finished the last race of the day or the race committee signals no more racing today, whichever is later. The same time limit applies to protests by the race committee and jury about incidents they observe in the racing area. This time limit also applies to requests for redress. This changes RRS 61.3 and 62.2.
- 18.3 Notices will be posted no later than 30 minutes of the protest time limit to inform competitors of hearings in which they are parties or named as witnesses. Hearings will be held in the designated jury room in the WPNSA building. Hearings may start before the scheduled time with the agreement of all parties.
- 18.4 The Race Committee, Technical Committee or International Jury intending to protest a boat under RRS 60.2, 60.3 or 62.4 will comply with RRS 61.1(b) by informing her by posting a notice on the Official Notice Board before the end of the

- protest time limit.
- 18.5 A list of boats that have been penalised under RRS Appendix P on the water or have been disqualified by the jury will be posted on the official notice board.
- 18.6 For the purposes of RRS 64.3(b) the ‘authority responsible’ is the Technical Committee appointed by the Organising Authority.
- 18.7 On the last day of racing of each series, except the Medal Races, a request for reopening a hearing shall be delivered:
- i) within the protest time limit if the party requesting reopening was informed of the decision on the previous day;
 - ii) no later than 30 minutes after the party requesting reopening was informed of the decision on that day. This changes RRS 66.
- 18.8 On the last day of racing of each series, except the Medal Race, a request for redress from a jury decision shall be delivered no later than 30 minutes after the decision was posted. This changes RRS 62.2.
- 18.9 The time limit for requests under RRS N1.4(b) is 5 minutes after a party is informed of a decision.

19. INTERNATIONAL JURY

Decisions of the International Jury will be final as provided in RRS 70.5

20. SCORING

20.1 Qualifying Series

20.1.1 The low point scoring system of Appendix A, as changed below, will apply to the Qualifying Series races.

20.1.2 For all fleets, SEVEN Qualifying Series races are required to be completed to constitute a series.

However at the end of Day 4 only SIX Qualifying races are required to be completed to constitute a Qualifying Series.

20.1.3 When 4 or more races have been completed, a boat’s Qualifying Series score shall be the total of her race scores excluding her worst score.

20.1.4 When RRS A4.2 and A5 apply, a boat’s penalty score shall be based on the number of boats in the largest group. This changes RRS A4.2 and A5.

20.2 Fleet Racing Series

20.2.1 The low point scoring system of Appendix A will apply separately to each Fleet Racing fleet. Fleet Racing fleets need not have completed the same number of fleet races.

20.2.2 When fewer than FOUR fleet races have been completed, a boat’s Fleet Racing Series score shall be the sum of her race scores.

20.2.3 When 4 or more races have been completed, a boat’s Fleet Racing Series score shall be the total of her race scores excluding her worst score.

20.2.4 The Fleet Racing Series score plus the Qualifying Series score will be the overall points for the Championship except for boats competing in the Medal Race.

20.2.5 The points for each boat carried forward into the Medal Race will be as SI 20.2.4 after the Fleet Racing Series.

20.2.6 The boats competing in the Medal Race will be placed 1st to 10th based on their total scores. The remaining boats in the Gold, Silver and Bronze Fleets will then be placed based on their Fleet Racing Series score.

20.3 Medal Race

20.3.1 The Medal Race will be for the top 10 overall in the Gold Fleet.

See Attachment C for details

20.4 Resolving Ties

20.4.1 In the Qualifying Series ties will be broken in accordance with RRS A8.

In the Fleet Racing Series ties will be broken in accordance with RRS A8 using the Fleet Racing scores.

20.4.2 In the Medal Race ties will be broken by the Medal Race score. This changes RRS A8.

20.5 **Scoring enquiries**

To request correction of an alleged error in posted race or series results, a boat shall complete a scoring enquiry form available at the race office. Scoring enquiry forms shall be delivered to the race office. A scoring enquiry may be regarded as a request for redress.

21. **SAFETY [DP][SP]**

21.1 Competitors shall wear a personal flotation device at all times while afloat, except briefly while changing or adjusting clothing or personal equipment.

21.2 Each competitor will be issued with a tally band number at registration. Each competitor shall, before going afloat each day, check out by personally collecting their tally band from the tally control point at the top of the launching ramp, keep while on the water and check back in immediately on returning to shore and at the latest by the end of protest time.

21.3 Boats not leaving the shore for the day's races shall notify the race office as soon as possible.

21.4 A boat that retires from a race shall notify the race committee as soon as possible.

21.5 When Flag V is displayed by the race committee signal vessel, coach and other support boats will collaborate with the race committee in rescue tasks.

22. **REPLACEMENT OF CREW OR EQUIPMENT**

22.1 Replacement of helm or crew shall require written approval of the PRO.

22.2 Request for replacement of helm or crew shall be made to the PRO at the first reasonable opportunity. On Sunday 19 May any replacement of helm or crew shall be approved no later than the protest time limit.

22.3 Replacement of equipment shall require written approval of the Technical Committee.

22.4 Request for replacement of equipment shall be made to the Technical Committee at the first reasonable opportunity. On Sunday 19 May any replacement equipment shall be approved no later than the protest time limit.

23. **EQUIPMENT AND MEASUREMENT CHECKS**

23.1 All boats will be inspected for class rules compliance prior to racing. Boats shall be presented for measurement checks at the times prescribed in SI 7.

23.2 In addition, any boat or equipment may be checked for compliance with the class rules and sailing instructions at any time. On the water, a boat can be instructed by the Technical Committee to proceed immediately to a designated area for measurement checks.

23.3 Limitations of equipment

i) Only one set of sails shall be used during the regatta. The sails shall be presented and stamped during the initial inspection.

ii) For 49er and 49erFX only - Only one forestay shall be used during the regatta. The forestay will be tagged during the initial inspection.

23.4 All boats, when not afloat, shall be placed in the official dinghy park.

23.5 All boats shall comply with RRS 78.1 from 1300 on the day before their first scheduled race (hereinafter referred to as "Day Zero") onwards. Non-compliance from 1300 on Day Zero until the start of the first race shall be reported, protested and penalized as if it were discovered after racing on the first day on

which races for that boat have been completed. This amends RRS 78.1

24. OFFICIAL BOATS

Official boats will be identified as follows:

| | |
|----------------------------------|-----------------------------|
| Race committee vessels..... | White flags with letter “A” |
| | White flags with letter “B” |
| | White flags with letter “C” |
| | White flags with letter “D” |
| Jury boats..... | White flags with JURY |
| Technical Committee vessels..... | White flags with MEASURER |
| Media boats..... | Green flags with MEDIA |

25. SUPPORT BOATS [DP][NP]

- 25.1 Team leaders, coaches and other support personnel shall not be in the area where boats are racing or within 100 metres of any boat racing from the time of the preparatory signal for the first fleet to start until all boats have finished or the race committee signals a postponement, general recall or abandonment. This SI does not apply during rescue operations.
- 25.2 At all times while on water, support boats shall display either their national flag on a staff with the top of the hoist minimum 1.5 m above water level or their national code letters (minimum height 200mm) on the outside of the hull or on the side of the outboard motor cover.
- 25.3 Support boats shall comply with the Class Support Boat Regulations including the Weymouth additions.
- 25.4 Support boats that are motoring at more than 5 knots shall remain at least 150 metres from any boat that is racing.
- 25.5 All support boats are at all times submitted to the Organising Authority and Race Committee and must comply with any instructions given by these authorities.
- 25.6 The International Jury may direct the Organising Authority to revoke privileges from any boat or person found to be in breach of SI 25.

26. CODE OF CONDUCT

Competitors and Support persons shall comply with any reasonable request from a regatta official or a member of the Organising Authority. Boats shall follow all instructions given by the OA when returning to shore to avoid overcrowding at the launching ramps.

27. TRASH DISPOSAL

As sailors, we seek to protect and restore our oceans and coastal waters. Trash may be placed aboard support and race committee boats.

28. RADIO COMMUNICATION [DP][NP]

A boat shall neither make radio transmissions while racing nor receive radio communications not available to all boats. This restriction also applies to mobile telephones.

29. PRIZES

The Organising Authority will provide prizes to the first three boats in each class.

30. RISK STATEMENT

RRS 4 of the Racing Rules of Sailing states: “The responsibility for a boat’s decision to participate in a race or to continue racing is hers alone.”

Sailing is by its nature an unpredictable sport and therefore inherently involves an element of risk. By taking part in the event, each competitor agrees and acknowledges that:

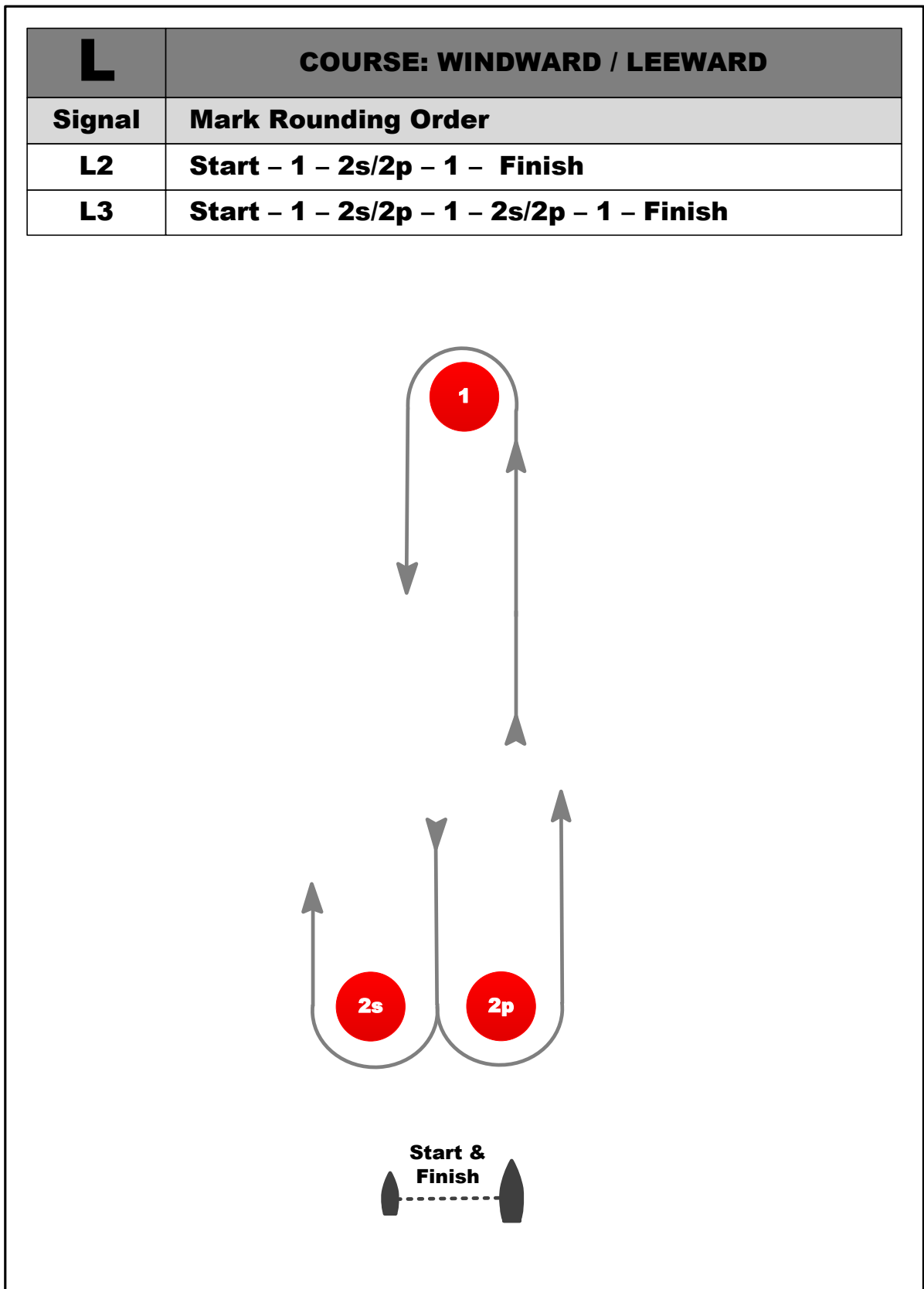
- a) They are aware of the inherent element of risk involved in the sport and accept responsibility for the exposure of themselves, their crew and their boat to such inherent risk whilst taking part in the event;
- b) They are responsible for the safety of themselves, their crew, their boat and their other property whether afloat or ashore;
- c) They accept responsibility for any injury, damage or loss to the extent caused by their own actions or omission;
- d) Their boat is in good order, equipped to sail in the event and they are fit to participate;
- e) The provision of a race management team, patrol boats and other officials and volunteers by the event organiser does not relieve them of their own responsibilities;
- f) The provision of patrol boat cover is limited to such assistance, particularly in extreme weather conditions, as can be practically provided in the circumstances.
- g) It is their responsibility to familiarise themselves with any risks specific to this venue or this event drawn to their attention in any rules and information produced for this event and to attend any safety meetings held for this event.

31. INSURANCE [DP][NP]

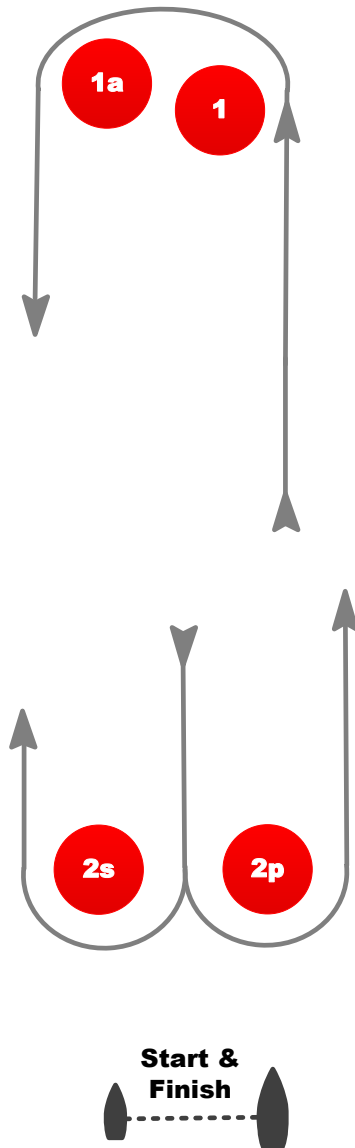
Each participating boat shall have valid third-party liability insurance with a minimum cover of at least £1,500,000 (or equivalent) per incident.

Attachment A

Course Diagram

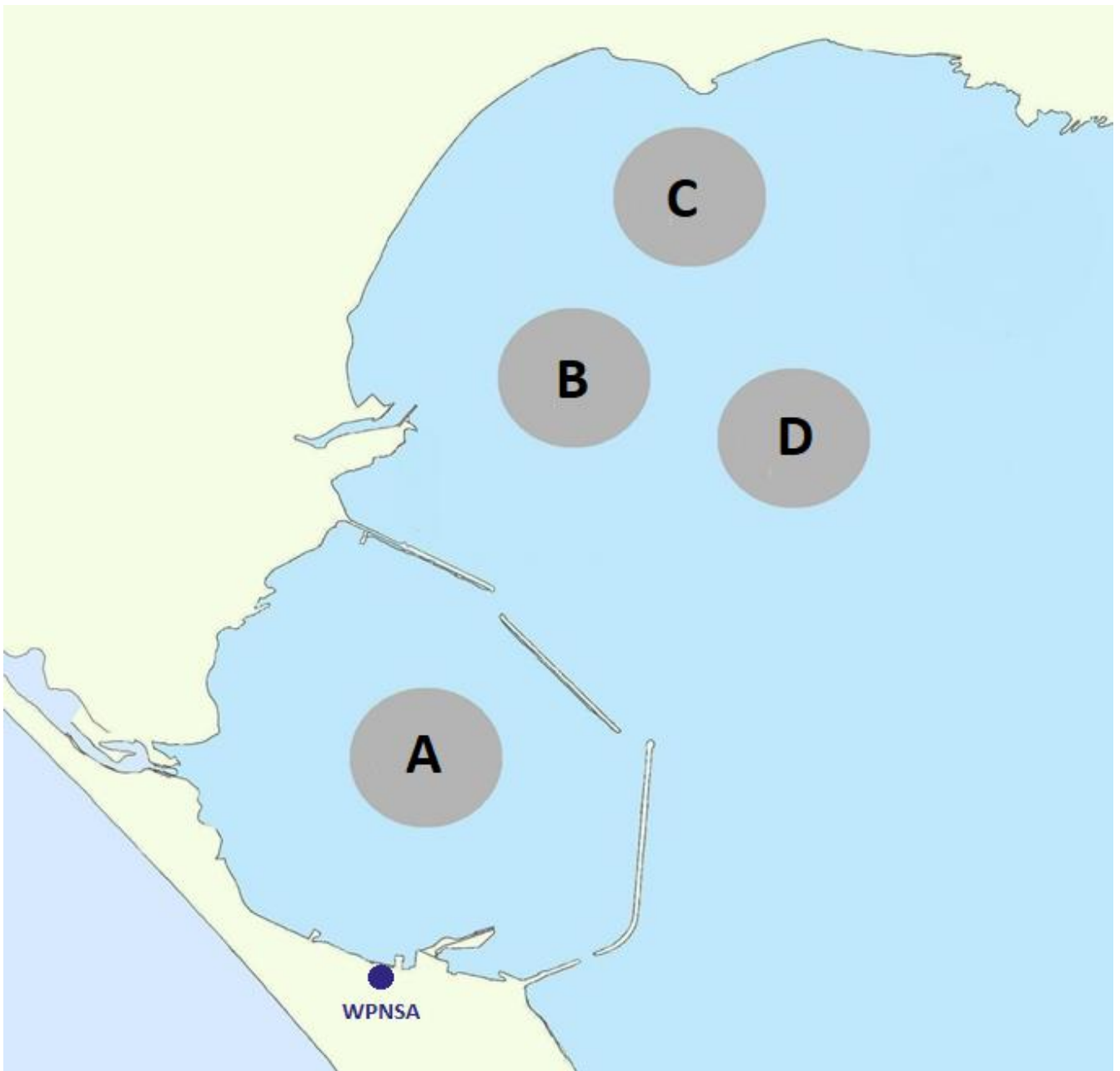


| LA | COURSE: WINDWARD / LEEWARD with spreader mark and leeward finish |
|---------------|---|
| Signal | Mark Rounding Order |
| LA2 | Start – 1 – 1a – 2s/2p – 1 – 1a – Finish |
| LA3 | Start – 1 – 1a – 2s/2p – 1 – 1a – 2s/2p – 1 – 1a – Finish |
| LA4 | Start – 1 – 1a – 2s/2p – 1 – 1a – 2s/2p – 1 – 1a – 2s/2p – 1 – 1a – Finish |



Attachment B

Course Locations



Attachment C

Format of Racing

The Championship will be in three series:

1. Qualifying Series
2. Fleet Racing Series
3. Medal Race

1. **Qualifying Series** (Days 1, 2 and 3)

- 1.1 The fleet will be split into THREE groups for 49er and TWO groups for 49erFX and Nacra 17 of approximately equal numbers of boats. The Qualifying Series will consist of a maximum of TEN races. Up to FOUR races are scheduled each day. If SEVEN races have not been completed by all fleets by the end of Day 3, the Qualifying Series will continue.

However if SIX races have been completed by all fleets by the end of Day 4, the Qualifying Series will be complete.

If the minimum number of Qualifying Series races have been completed by all fleets by the end of racing on any day and some boats have more races scores than others, scores for the most recent races will be excluded when calculating their Qualifying Series scores.

- 1.2 The Organising Authority will make initial fleet assignments on the basis of the top 50 ranked boats from the World Sailing rankings, with the remainder being taken in numerical order of sail numbers. The ranking will remain in force until the end of the day during which the 2nd Qualifying Race is completed by all fleets.

- 1.3 If all fleets have completed the same number of races, boats will be reassigned to fleets on the basis of their Qualifying Series scores as detailed below. If all fleets have not completed the same number of races by the end of a day, and the minimum number of races has not been completed the fleets with fewer races will continue racing the following day until all fleets have completed the same number of races. However, the reassignments will be calculated for those races, numbered in order of completion, completed by all fleets. Reassignments will be made as follows:

FOR 49er

| <u>Place in Qualifying Series score</u> | <u>Fleet assignment</u> |
|---|-------------------------|
| First | Yellow |
| Second | Blue |
| Third | Red |
| Fourth | Red |
| Fifth | Blue |
| Sixth | Yellow |
| and so on | |

For 49erFX and Nacra 17

| <u>Place in Qualifying Series score</u> | <u>Fleet assignment</u> |
|---|-------------------------|
| First | Yellow |

Second Blue
Third Blue
Fourth Yellow
and so on

The fleet assignments will be posted no later than 0900 on the day they take effect.

Fleet Racing Series (Days 4, 5, 6 and 7)

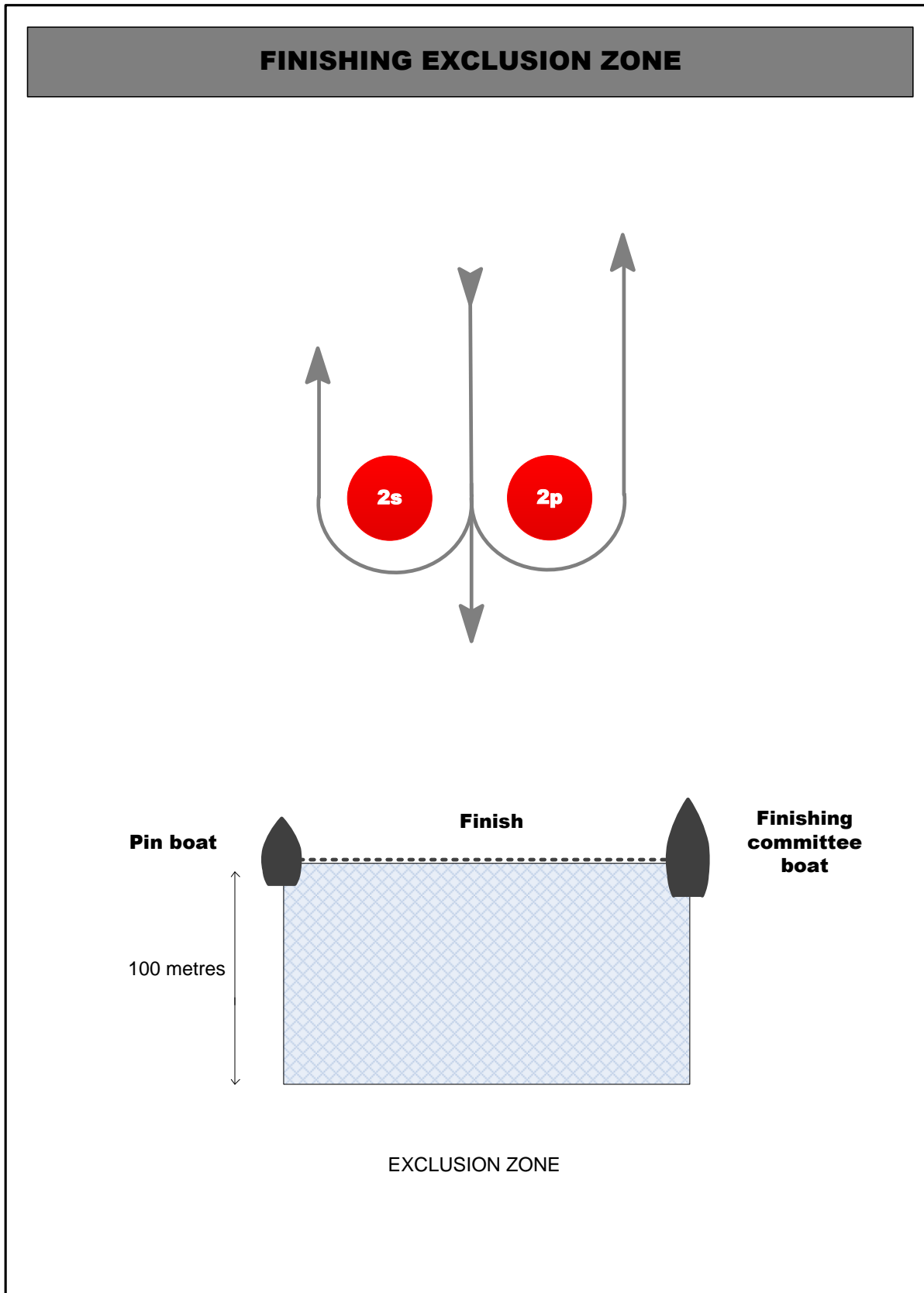
- 2.1 For 49er and 49erFX the top 25 boats and for Nacra 17 the top 50% of boats sailing in the Qualifying Series based on their Qualifying Series scores after Day 3 will race in the Gold fleet (unless the Qualifying Series has been extended under section 1.1 above).
- 2.2 The remaining boats will race in the Silver or Bronze fleets of approximately equal numbers depending on the number of boats.
- 2.3 THREE races are scheduled per day for each fleet. Target time is 30 minutes for ALL fleets
- 2.4 No warning signal for the Fleet Racing Series will be made after 1600 on Sunday 19 May.
- 2.5 Day 7, TWO fleet races are scheduled for ALL Fleets.

Medal Race (Day 7)

- 3.1 No warning signal for the Medal Races will be made after 1800 on Sunday 19 May.
- 3.2 The Medal Race will be for the top 10 boats overall in the Gold Fleet.
ONE race, target time 20 minutes, double low points scoring
- 3.3 The points for each boat carried forward into the Medal Race will be as SI 20.2.4 after the Fleet Racing Series.
- 3.4 Medal Race boats shall be made available for equipment inspection no later than 60 mins before the Medal Race warning signal. A quarantine area may be set aside for the competing Medal Race boats. Boats shall comply with any instructions of the technical committee concerning inspection or quarantine.

Attachment E

Finishing Exclusion Zone



Attachment D

Provisional Racing Schedule

| 2019 European Championship - Weymouth | | | | |
|---------------------------------------|-------------------------|-----------------------|-----------------------|-----------------------|
| Warning signal | | | | |
| Day 0 – May 12 | Course A - Black | Course B - Pink | Course C - Red | Course D - Yellow |
| Practice Day | | | | |
| 12:55 | Practice Race - 49er FX | Practice Race - 49er | Practice Race - 49er | Practice Race - Nacra |
| Day 1 – May 13 | Course A - Pink | Course B - Black | Course C - Red | Course D - Yellow |
| Qualifying | | | | |
| 10:55 | 49erFX Yellow Qual R1 | 49erFX Blue Qual R1 | Nacra Yellow Qual R1 | Nacra Blue Qual R1 |
| ASAP | 49erFX Yellow Qual R2 | 49erFX Blue Qual R2 | Nacra Yellow Qual R2 | Nacra Blue Qual R2 |
| ASAP | 49erFX Yellow Qual R3 | 49erFX Blue Qual R3 | Nacra Yellow Qual R3 | Nacra Blue Qual R3 |
| Not Before 12:55 | | 49er Red Qual R1 | 49er Yellow Qual R1 | 49er Blue Qual R1 |
| ASAP | | 49er Red Qual R2 | 49er Yellow Qual R2 | 49er Blue Qual R2 |
| ASAP | | 49er Red Qual R3 | 49er F Yellow Qual R3 | 49er Blue Qual R3 |
| ASAP | | 49er Red Qual R4 | 49er Yellow Qual R4 | 49er Blue Qual R4 |
| Day 2- May 14 | Course A - Pink | Course B - Black | Course C - Yellow | Course D - Red |
| Qualifying | | | | |
| 10:55 | | 49er Yellow Qual R5 | 49er Blue Qual R5 | 49er Red Qual R5 |
| ASAP | | 49er Yellow Qual R6 | 49er Blue Qual R6 | 49er Red Qual R6 |
| ASAP | | 49er Yellow Qual R7 | 49er Blue Qual R7 | 49er Red Qual R7 |
| Not Before 12:55 | 49erFX Blue Qual R4 | 49erFX Yellow Qual R4 | Nacra Blue Qual R4 | Nacra Yellow Qual R4 |
| ASAP | 49erFX Blue Qual R5 | 49erFX Yellow Qual R5 | Nacra Blue Qual R5 | Nacra Yellow Qual R5 |

Sailing Instructions – final**49er, 49erFX and Nacra 17 European Championships**

| | | | | |
|--|------------------------------|----------------------------|--------------------------|--------------------------|
| ASAP | 49erFX Blue Qual R6 | 49erFX Yellow Qual R6 | Nacra Blue Qual R6 | Nacra Yellow Qual R6 |
| ASAP | 49erFX Blue Qual R7 | 49erFX Yellow Qual R6 | Nacra Blue Qual R7 | Nacra Yellow Qual R7 |
| Day 3 – May 15 Qualifying | Course A - Black | Course B - Pink | Course C - Red | Course D - Yellow |
| 10:55 | | 49er Blue Qualifying R8 | 49er Red Qual R8 | 49er Yellow Qual R8 |
| ASAP | | 49er Blue Qualifying R9 | 49er Red Qual R9 | 49er Yellow Qual R9 |
| ASAP | | 49er Blue Qualifying R10 | 49er Red Qual R10 | 49er Yellow Qual R10 |
| Not Before 12:55 | 49erFX Yellow Qual R8 | 49erFX Blue Qualifying R8 | Nacra Yellow Qual R8 | Nacra Blue Qual R8 |
| ASAP | 49erFX Yellow Qual R9 | 49erFX Blue Qualifying R9 | Nacra Yellow Qual R9 | Nacra Blue Qual R9 |
| ASAP | 49erFX Yellow Qual R10 | 49erFX Blue Qualifying R10 | Nacra Yellow Qual 10 | Nacra Blue Qual R10 |
| Day 4 - May 16 Flexible Day | Course A | Course B | Course C | Course D |
| | | | | |
| | Schedule to be decided later | | | |
| | | | | |
| | | | | |
| | | | | |
| | | | | |
| | | | | |
| Day 5 – May 17 Fleet Racing | Course A - Black | Course B - Pink | Course C - Yellow | Course D - Red |
| 10:55 | 49erFX Gold F11 | 49erFX Silver F11 | Nacra Gold F11 | 49er Bronze F11 |
| ASAP | 49erFX Gold F12 | 49erFX Silver F12 | Nacra Gold F12 | 49er Bronze F12 |

Sailing Instructions – final**49er, 49erFX and Nacra 17 European Championships**

| | | | | |
|--|--------------------------|-------------------------|-----------------------|--------------------------|
| ASAP | 49erFX Gold F13 | 49erFX Silver F13 | Nacra Gold F13 | 49er Bronze F13 |
| Not Before 12:55 | 49er Gold F11 | 49er Silver F11 | Nacra Silver F11 | |
| ASAP | 49er Gold F12 | 49er Silver F12 | Nacra Silver F12 | |
| ASAP | 49er Gold F13 | 49er Silver F13 | Nacra Silver F13 | |
| Day 6 – May 18 Fleet Racing | Course A - Yellow | Course B - Black | Course C - Red | Course D - Pink |
| 10:55 | Nacra Gold F14 | 49er Gold R14 | 49er Bronze F14 | 49er Silver R14 |
| ASAP | Nacra Gold F15 | 49er Gold R15 | 49er Bronze F15 | 49er Silver R15 |
| ASAP | Nacra Gold F16 | 49er Gold R16 | 49er Bronze F16 | 49er Silver R16 |
| Not Before 12:55 | 49erFX Gold R14 | 49erFX Silver R14 | Nacra Silver F14 | |
| ASAP | 49erFX Gold R15 | 49erFX Silver R15 | Nacra Silver F15 | |
| ASAP | 49erFX Gold R16 | 49erFX Silver R16 | Nacra Silver F16 | |
| Day 7 – May 19 Fleet Racing | Course A - Black | Course B - Pink | Course C - Red | Course D - Yellow |
| 09:55 | Nacra Gold F17 | 49erFX Gold R17 Yellow | 49er Gold F17 | Nacra Silver F17 |
| ASAP | Nacra Gold F18 | 49erFX Gold R18 Yellow | 49er Gold F18 | Nacra Silver F18 |
| ASAP | | 49erFX Silver F17 | 49er Silver R17 | 49er Bronze R17 |
| ASAP | | 49erFX Silver F18 | 49er Silver R18 | 49er Bronze R18 |
| Not before 15:00 | 49erFX Medal Race | | | |
| Not before 15:30 | 49er Medal Race | | | |
| Not before 16:00 | Nacra Medal Race | | | |