



## *49er, 49erFX and Nacra17*

# **World Championships**

**Geelong, Australia 8th to 15th February 2020**

**The Organising Authority is the Royal Geelong Yacht Club in conjunction with the International 49er and Nacra 17 Class Associations**

# **SAILING INSTRUCTIONS**

[NP] denotes a rule that shall not be grounds for protests by a boat. This changes RRS 60.1(a).  
[DP] denotes a rule for which the penalty is at the discretion of the International Jury.  
[SP] denotes a rule for which a standard penalty may be applied by the race committee without a hearing or a discretionary penalty applied by the International Jury with a hearing

## **1. RULES**

- 1.1 The regatta will be governed by the rules as defined in *The Racing Rules of Sailing*.
- 1.2 RRS Appendix P, *Special Procedures for Rule 42*, will apply.
- 1.3 For the Medal Races, World Sailing Addendum Q (as posted on the official notice board) takes precedence over any conflicting instructions.
- 1.4 The Class Rules of the International 49er and Nacra 17 Class Associations will apply except for any that are altered by the Notice of Race or the Sailing Instructions. The Class Race Management Guidelines will also apply
- 1.5 No National Prescriptions will apply.
- 1.6 [DP] Penalties for breaches of RRS 41, the Class Rules or the Equipment Inspection Regulations are at the discretion of the International Jury.
- 1.7 For 49er and 49erFX - the bottom two panels of the jib area shall be restricted to Class and Event advertising and all competitors shall place class nominated branding on their jibs according to the World Sailing approved 49er Class jib advertising policy.  
For Nacra 17 - the area of the jib, except for the visibility window, shall be restricted to Class and Event advertising and all competitors shall place class nominated branding on their jibs according to the World Sailing approved Nacra 17 Class jib advertising policy.  
All boats shall place the Class nominated stickers on their booms.
- 1.8 This is a World Sailing ranking 200 point event

**2. IDENTIFICATION [DP][NP][SP]**

- 2.1 Boats will be required to affix the stickers provided by the Organising Authority on both sides of the forward 25% of the hull, 200mm from the bow. Boats shall affix the stickers in accordance with any instructions given by the Organising Authority.
- 2.2 [SP] Provided two or more Qualifying races have been completed, from Tuesday 11 February onwards, each day while racing, the sailors of the first, second and third boats in series ranking at the beginning of the day shall wear yellow, blue and red lycra bibs respectively. These bibs will be available at the Race Office each day from two hours before the first scheduled warning signal of the day and shall be returned by competitors as soon as possible after the day's racing.

**3. CAMERAS AND ELECTRONIC EQUIPMENT [NP]**

- 3.1 Boats may be required to carry on board cameras, sound equipment or positioning equipment as specified by the Organising Authority. Corrector weights may be required for boats without cameras. Competitors may also use their own camera recording equipment and attachments, but these are to be removable for weighing. A boat shall not be given redress based on a claim involving this equipment. This changes RRS 62.1
- 3.2 [DP][SP][NP] The Organising Authority will supply GPS tracking units for use during the Qualifying Series, the Final Series and the Medal Races. Boats shall carry these GPS units whilst racing. The GPS units shall be picked up every morning from the Race Office before going afloat and shall be returned to the Race Office no later than the end of protest time.
- 3.3 No competitor or support team shall use a drone over the racing area.

**4. NOTICES TO COMPETITORS**

Notices to competitors will be posted on the Official Notice Board located next to the Race Office and on the World Championships website  
<https://49er.org/event/2020-world-championship/#noticeboard>

**5. CHANGES TO SAILING INSTRUCTIONS**

Any change to the sailing instructions will be posted not less than two hours before the scheduled warning signal on the day it will take effect, except that any change to the timing of races, will be posted by 2000 the day before it will take effect.

**6. SIGNALS MADE ASHORE**

- 6.1 Signals made ashore will be displayed at the official flagpole located on the lawn in front of the clubhouse. When a signal is displayed over a fleet flag, it applies to that fleet only.
- 6.2 [DP][NP][SP] Flag D displayed ashore with one sound signal this means: “the warning signal will be made not less than 45 minutes after flag D is displayed or not before the scheduled time. Boats shall not leave their allocated berth until this signal is made”.

**7. SCHEDULE OF EVENTS**

- |     |                           |             |                               |
|-----|---------------------------|-------------|-------------------------------|
| 7.1 | Thursday 6 February       | 0900 - 1800 | Registration/Nacra Inspection |
|     |                           | 1800        | 49er Open Forum               |
|     | Friday 7 February         | 0900 - 1800 | Registration/49er Inspection  |
|     |                           | 1800        | Nacra 17 Open Forum           |
|     | Saturday 8 February       | 0900 - 1800 | Registration/Inspection       |
|     |                           | 1800        | 49er Class EGM                |
|     |                           | 1830        | Nacra 17 Class EGM            |
|     | Day 0 - Sunday 9 February | 0900 - 1100 | Registration/Inspection       |
|     |                           | 1700        | Competitors Briefing          |

- |                               |              |                         |
|-------------------------------|--------------|-------------------------|
|                               | 1800         | Opening Ceremony        |
| Day 1 - Monday 10 February    | 1055 warning | Qualifying Series Races |
| Day 2 - Tuesday 11 February   | 1055         | Qualifying Series Races |
| Day 3 - Wednesday 12 February | 1055         | Qualifying Series Races |
| Day 4 - Thursday 13 February  | 1055         | Final Series Races      |
| Day 5 - Friday 14 February    | 1055         | Final Series Races      |
| Day 6 - Saturday 15 February  | 0955         | Final Series Races      |
|                               | 1355         | Medal Races             |
- Prize Giving and Closing Ceremony as soon as possible after the Medal Races
- 7.2 On Saturday 15 February there will be no warning signal after 1400 for those taking part in the final Opening Series Races and after 1600 for those taking part in the Medal Races.
- 7.3 There will be an informal meeting with the PRO for the coaches at 0830 each morning from Tuesday 11 February in the Clubhouse.

## 8. **FORMAT OF RACING - QUALIFYING SERIES, FINAL SERIES AND MEDAL RACES**

The regatta will consist of an Opening Series and a Medal Race.

For 49er and 49erFX - The Opening Series will be divided into a Qualifying Series and a Final Series.

For Nacra 17 - The Opening Series will be a Single Series

These races are as described in Attachment C. The provisional racing schedule is described in Attachment D

## 9. **CLASS FLAGS**

- 9.1 In the Qualifying Series, for 49er the class flag will be the class insignia on a background of the colour of the appropriate fleet, yellow, blue or red and for 49erFX the class insignia on a background of yellow or blue.
- 9.2 In the Final Series, the class flags will be the 49er class insignia on a background of yellow (gold fleet), blue (silver fleet) and red (bronze fleet) and for 49erFX the class insignia on a background of yellow (gold fleet) and blue (silver fleet).
- 9.3 For Nacra 17 the class flag will be the class insignia on a background of yellow.
- 9.4 In the Medal Races, the class flags will be the class insignia on a background of yellow.

## 10. **RACING AREAS AND FLEET ASSIGNMENTS**

- 10.1 Attachment B shows the location of the race areas.
- 10.2 The provisional race schedule including the time of the first warning signals and assignment of fleets to racing areas will be as per Attachment D. Any change to racing areas will be posted before flag D is displayed, see SI 6.2.
- 10.3 [DP][NP] Boats not racing shall not sail in a course area being used by another fleet.

## 11. **THE COURSES**

- 11.1 Attachment A shows the course to be sailed, the order in which the marks are to be passed, the side on which each mark is to be left, and the signals indicating the number of rounds to be sailed.
- 11.2 No later than the warning signal, the race committee signal vessel will display the approximate compass bearing from the race committee signal vessel to Mark 1.
- 11.3 There will be a gate at the leeward marks and Nacra 17 will have a spreader mark at the windward mark.
- 11.4 A gate may be replaced by a single mark to be left to port

## 12. **MARKS**

Course A {Forward WIP marks}	
All marks.....	Red cone with WIP logo
Change mark .....	Red cone with black band
Course B	
All marks .....	Orange cone
Change mark.....	Orange cone with black band
Course C	
All marks.....	Pink cylinders
Change mark .....	Pink cylinder with black band
Spreader mark (Nacra only) .....	
Starting marks.....	Orange cylinder
Finishing marks.....	Race Committee vessels
	Main Race Committee vessel
	with either a race committee vessel or a yellow cone mark

### 13. THE START

- 13.1 The starting line will be between staffs displaying orange flags on the starting marks.
- 13.2 [DP][NP] Boats whose warning signal has not been made shall avoid the starting area.
- 13.3 A boat starting later than four minutes after her starting signal will be scored Did Not Start. This changes RRS A4 and A5.
- 13.4 To alert boats that a race or sequence of races will begin soon, the orange starting line flag will be displayed with ONE sound signal not less than TWO minutes before the warning signal is displayed.

### 14. CHANGE OF THE NEXT LEG OF THE COURSE

- 14.1 To change the next leg of the course, the race committee will lay a change mark, which will be as detailed in SI 12. When a new mark is laid, the original mark will be removed as soon as possible.
- 14.2 For Nacra 17 only - if the windward mark is changed a new spreader mark will not be laid

### 15. THE FINISH

- 15.1 The finishing line will be between the staff displaying a blue flag on the main race committee vessel and either another race committee vessel displaying a blue flag or the yellow finishing mark.
- 15.2 For Nacra 17 only - [DP][SP] When the blue finishing flag is displayed on the main committee vessel NO boats shall enter the Finishing Exclusion Zone other than boats that are finishing who shall leave the zone immediately. See Attachment E

### 16. TIME LIMITS

- 16.1 For the Qualifying Series and Final Series the time limits and target times are as follows:
- |                    |            |
|--------------------|------------|
| Time limit.....    | 45 minutes |
| Finish window..... | 15 minutes |
- For Nacra 17 only in winds averaging less than 10 knots the Finishing window is increased to 20 minutes
- |                  |  |
|------------------|--|
| Target time..... | 30 minutes or as described in Appendix C |
|------------------|--|
- 16.2 For the Medal Races the time limits and target times are as follows:
- |                    |            |
|--------------------|------------|
| Time limit.....    | 30 minutes |
| Finish window..... | 10 minutes |
| Target time.....   | 20 minutes |
- 16.3 Boats failing to finish within the Finish Window (the time after the first boat sails

the course and finishes) will be scored Did Not Finish without a hearing. This changes RRS 35, A4 and A5.

## **17. PENALTY SYSTEM**

- 17.1 Appendix P, *Special Procedures for Rule 42* will apply, as changed by SI 17.2
- 17.2 RRS 44.1 and RSS P2.1 are changed so that the Two-Turns penalty is replaced by a One-Turn penalty.
- 17.3 Penalties for breaches of NOR 18 (Insurance), NOR 20 (Media Rights), RRS 41, the Equipment Inspection Regulations, the Class Rules and rules in the Notice of Race and Sailing Instructions marked [DP], are at the discretion of the International Jury.
- 17.4 Breaches of rules in the SIs marked [NP] will not be grounds for a protest by a boat. This changes RRS 60.1(a).
- 17.5 For breaches of the SIs marked [SP], the race committee may apply a standard penalty without a hearing. A list of these breaches and the associated standard penalties will be posted on the Official Notice Board. However, the race committee may protest a boat when they consider the standard penalty to be inappropriate. A boat that has been penalised with a standard penalty can neither be protested for the same incident by another boat nor can another boat request redress for this race committee action. This changes RRS 60.1, 63.1 and Appendix A5.

## **18. PROTESTS AND REQUESTS FOR REDRESS**

- 18.1 Protest forms are available at the Race Office. Protests and requests for redress or reopening shall be delivered there within the protest time limit.
- 18.2 The protest time limit will be posted on the Official Notice Board. The protest time limit will be 60 minutes after the last boat of each fleet has finished the last race of the day or the race committee signals no more racing today, whichever is later. The same time limit applies to protests by the race committee and jury about incidents they observe in the racing area. This time limit also applies to requests for redress. This changes RRS 61.3 and 62.2.
- 18.3 Notices will be posted no later than 30 minutes after the protest time limit to inform competitors of hearings in which they are parties or named as witnesses. Hearings will be held in the designated jury rooms. Hearings may start before the scheduled time with the agreement of all parties.
- 18.4 The Race Committee, Technical Committee or International Jury intending to protest a boat under RRS 60.2, 60.3 or 62.4 will comply with RRS 61.1(b) by informing her by posting a notice before the end of the protest time limit.
- 18.5 A list of boats that have been penalised under RRS Appendix P on the water or have been disqualified by the jury will be posted on the Official Notice Board.
- 18.6 For the purposes of RRS 64.3(b) the 'authority responsible' is the Technical Committee appointed by the Organising Authority.
- 18.7 On the last day of racing of each series, except the Medal Races, a request for reopening a hearing shall be delivered:
  - i) within the protest time limit if the party requesting reopening was informed of the decision on the previous day;
  - ii) no later than 30 minutes after the party requesting reopening was informed of the decision on that day. This changes RRS 66.
- 18.8 On the last day of racing of each series, except the Medal Race, a request for redress from a jury decision shall be delivered no later than 30 minutes after the decision was posted. This changes RRS 62.2.
- 18.9 The time limit for requests under RRS N1.4(b) is 5 minutes after a party is informed of a decision.

**19. INTERNATIONAL JURY**

Decisions of the International Jury will be final as provided in RRS 70.5

**20. SCORING**

- 20.1 The low point scoring system of Appendix A, as changed below, will apply.
- 20.2 FIVE races are required to be completed to constitute a Championship.
- 20.3 When less than FOUR races have been completed, a boat's overall score shall be the sum of her race scores.
- 20.4 When FOUR or more races have been completed, a boat's overall score shall be the total of her race scores excluding her worst score.
- 20.5 When RRS A4.2 and A5 apply, a boat's penalty score shall be based on the number of boats in the largest group. This changes RRS A4.2 and A5.
- 20.6 Final Series fleets need not have completed the same number of races.
- 20.7 The Qualifying Series score plus the Final Series score will be the overall points for the Championship except for boats competing in the Medal Race
- 20.8 The boats in the Gold Fleet will be ranked above the boats in the Silver Fleet and so on for the Bronze fleet if applicable.
- 20.9 The points for each boat carried forward into the Medal Race will be as SI 20.7 after the Final Series.
- 20.10 The boats competing in the Medal Race will be placed 1st to 10th based on their total scores. The remaining boats in the Gold, Silver and Bronze Fleets will then be placed based on their Opening Series score.
- 20.11 **Medal Race**  
The Medal Race will be for the top 10 boats overall in the Opening Series.  
See Attachment C for details
- 20.12 **Resolving Ties**
- 20.12.1 For the Qualifying Series ties will be broken in accordance with RRS A8. In the Final Series ties will be broken in accordance with RRS A8 using the Final Series scores.
- 20.12.2 For Nacra 17 ties will be broken in accordance with RRS A8 using the Opening Series scores
- 20.12.3 In the Medal Race ties will be broken by the Medal Race score. This changes RRS A8.
- 20.13 **Scoring enquiries**  
To request correction of an alleged error in posted race or series results, a boat shall complete a scoring enquiry form available at the race office. Scoring enquiry forms shall be delivered to the race office. A scoring enquiry may be regarded as a request for redress.

**21. SAFETY [DP][SP]**

- 21.1 Competitors shall wear a personal flotation device at all times while afloat, except briefly while changing or adjusting clothing or personal equipment.
- 21.2 [SP] Each competitor shall, before going afloat each day, check out with their tracker unit, keep while on the water and check back in immediately on returning to shore and at the latest by the end of protest time.
- 21.3 Boats not leaving the shore for the day's races shall notify the race office as soon as possible.
- 21.4 A boat that retires from a race shall notify the race committee as soon as possible.
- 21.5 When Flag V is displayed by the race committee signal vessel, coach and other support boats will collaborate with the race committee in rescue tasks.
- 21.6 The Race Committee radio channels are;
- |        |    |
|--------|----|
| Team A | 71 |
| Team B | 72 |

Team C 73

**22. REPLACEMENT OF CREW OR EQUIPMENT**

- 22.1 Replacement of helm or crew shall require written approval of the PRO.
- 22.2 Request for replacement of helm or crew shall be made to the PRO at the first reasonable opportunity. On Saturday 15 February any replacement of helm or crew shall be approved no later than the protest time limit.
- 22.3 Replacement of equipment shall require written approval of the Technical Committee.
- 22.4 Request for replacement of equipment shall be made to the Technical Committee at the first reasonable opportunity. On Saturday 15 February any replacement equipment shall be approved no later than the protest time limit.

**23. EQUIPMENT AND MEASUREMENT CHECKS**

- 23.1 All boats will be inspected for class rules compliance prior to racing. Boats shall be presented for measurement checks at the times prescribed in SI 7.
- 23.2 In addition, any boat or equipment may be checked for compliance with the class rules and sailing instructions at any time. On the water, a boat can be instructed by the Technical Committee to proceed immediately to a designated area for measurement checks.
- 23.3 Limitations of equipment
- i) Only one set of sails shall be used during the regatta. The sails shall be presented and stamped during the initial inspection.
  - ii) For 49er and 49erFX only - Only one forestay shall be used during the regatta. The forestay will be tagged during the initial inspection.
- 23.4 All boats, when not afloat, shall be placed in the official dinghy park.
- 23.5 All boats shall comply with RRS 78.1 from 1300 on the day before their first scheduled race (hereinafter referred to as “Day Zero”) onwards. Non-compliance from 1300 on Day Zero until the start of the first race shall be reported, protested and penalized as if it were discovered after racing on the first day on which races for that boat have been completed. This amends RRS 78.1

**24. OFFICIAL BOATS**

Official boats will be identified as follows:

Race committee boats.....	White flags with letter “A” White flags with letter “B” White flags with letter “C”
Jury boats.....	White flags with JURY
Technical Committee boats.....	White flags with MEASURER
Media boats.....	White flags with MEDIA

**25. SUPPORT BOATS [DP][NP]**

- 25.1 Team leaders, coaches and other support personnel shall not be in the area where boats are racing or within 100 metres of any boat racing from the time of the preparatory signal for the first fleet to start until all boats have finished or the race committee signals a postponement, general recall or abandonment. This SI does not apply during rescue operations.
- 25.2 At all times while on water, support boats shall display either their national flag on a staff with the top of the hoist minimum 1.5 m above water level or their national code letters (minimum height 200mm) on the outside of the hull or on the side of the outboard motor cover.
- 25.3 Support boats shall comply with the Class Support Boat Regulations.
- 25.4 Support boats that are motoring at more than 5 knots shall remain at least 150

- metres from any boat that is racing.
- 25.5 All support boats are at all times submitted to the Organising Committee and Race Committee authority and must comply with any instructions given by these authorities.
- 25.6 The International Jury may direct the Organising Authority to revoke privileges from any boat or person found to be in breach of SI 25.
- 25.7 Support vessels shall always be on the outside of the media boats (away from the fleet side) so that the media boats can capture images without coach boats in the image. This does not apply during any safety incident.
- 26. CODE OF CONDUCT [DP][NP]**  
Competitors shall comply with any reasonable request from a regatta official or a member of the Organising Authority.
- 27. TRASH DISPOSAL [DP][NP]**  
As sailors, we seek to protect and restore our oceans and coastal waters. Trash may be placed aboard support and race committee boats
- 28. RADIO COMMUNICATION [DP][NP]**  
A boat shall neither make radio transmissions while racing nor receive radio communications not available to all boats. This restriction also applies to mobile telephones.
- 29. PRIZES**
- 29.1 Prizes for the Championships will be announced and awarded at the end of the Medal Races for:
- World Championship - 1st to 10th
  - Silver fleet - 1st to 5th (if applicable)
  - Bronze fleet - 1st to 5th (if applicable)
  - First Place Under 23 age group
- 29.2 Other prizes may be awarded at the discretion of the Organising Authority
- 30. RISK STATEMENT**  
RRS 4 of the Racing Rules of Sailing states: “The responsibility for a boat’s decision to participate in a race or to continue racing is her’s alone.”  
Sailing is by its nature an unpredictable sport and therefore inherently involves an element of risk. By taking part in the event, each competitor agrees and acknowledges that:
- a) They are aware of the inherent element of risk involved in the sport and accept responsibility for the exposure of themselves, their crew and their boat to such inherent risk whilst taking part in the event;
  - b) They are responsible for the safety of themselves, their crew, their boat and their other property whether afloat or ashore;
  - c) They accept responsibility for any injury, damage or loss to the extent caused by their own actions or omission;
  - d) Their boat is in good order, equipped to sail in the event and they are fit to participate;
  - e) The provision of a race management team, patrol boats and other officials and volunteers by the event organiser does not relieve them of their own responsibilities;
  - f) The provision of patrol boat cover is limited to such assistance, particularly in extreme weather conditions, as can be practically provided in the circumstances.



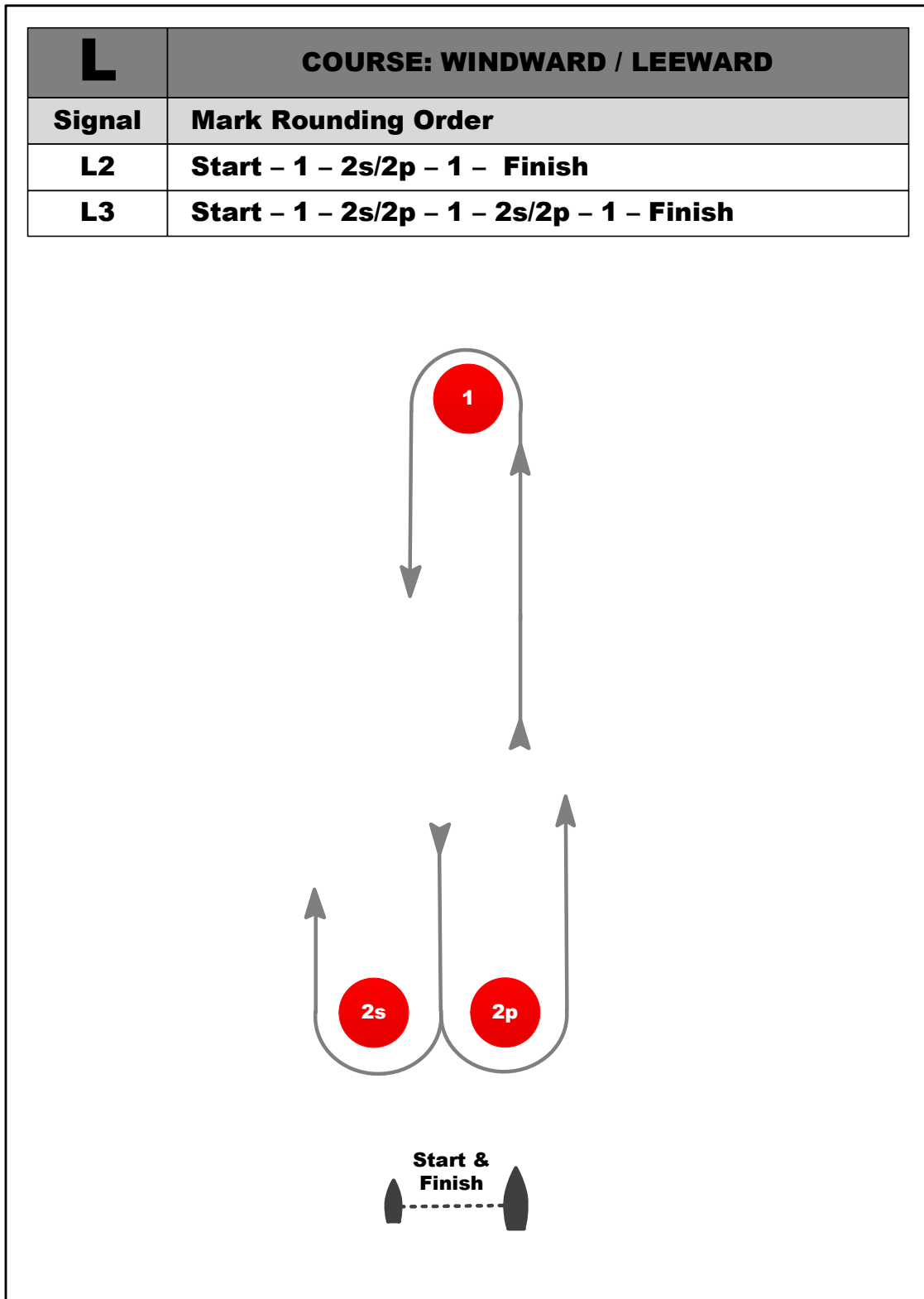
- g) It is their responsibility to familiarise themselves with any risks specific to this venue or this event drawn to their attention in any rules and information produced for this event and to attend any competitors' briefing held for this event.

**31. INSURANCE [DP][NP]**

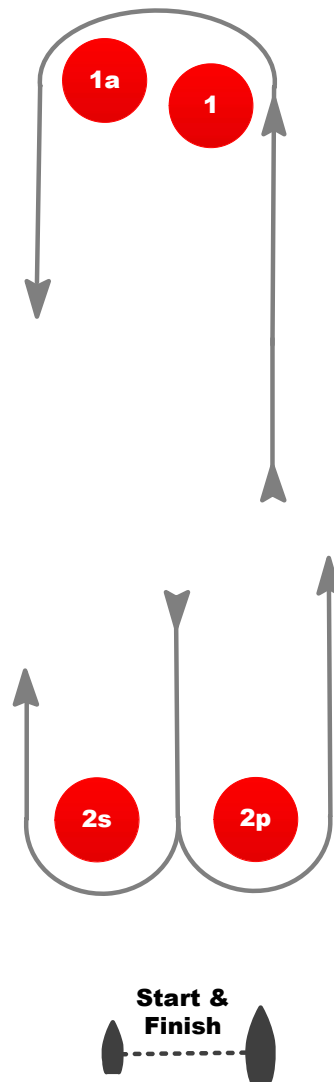
Each participating boat shall have valid third-party liability insurance with a minimum cover of at least AUD \$5,000,000 (or equivalent) per incident.

## Attachment A

## Course Diagram

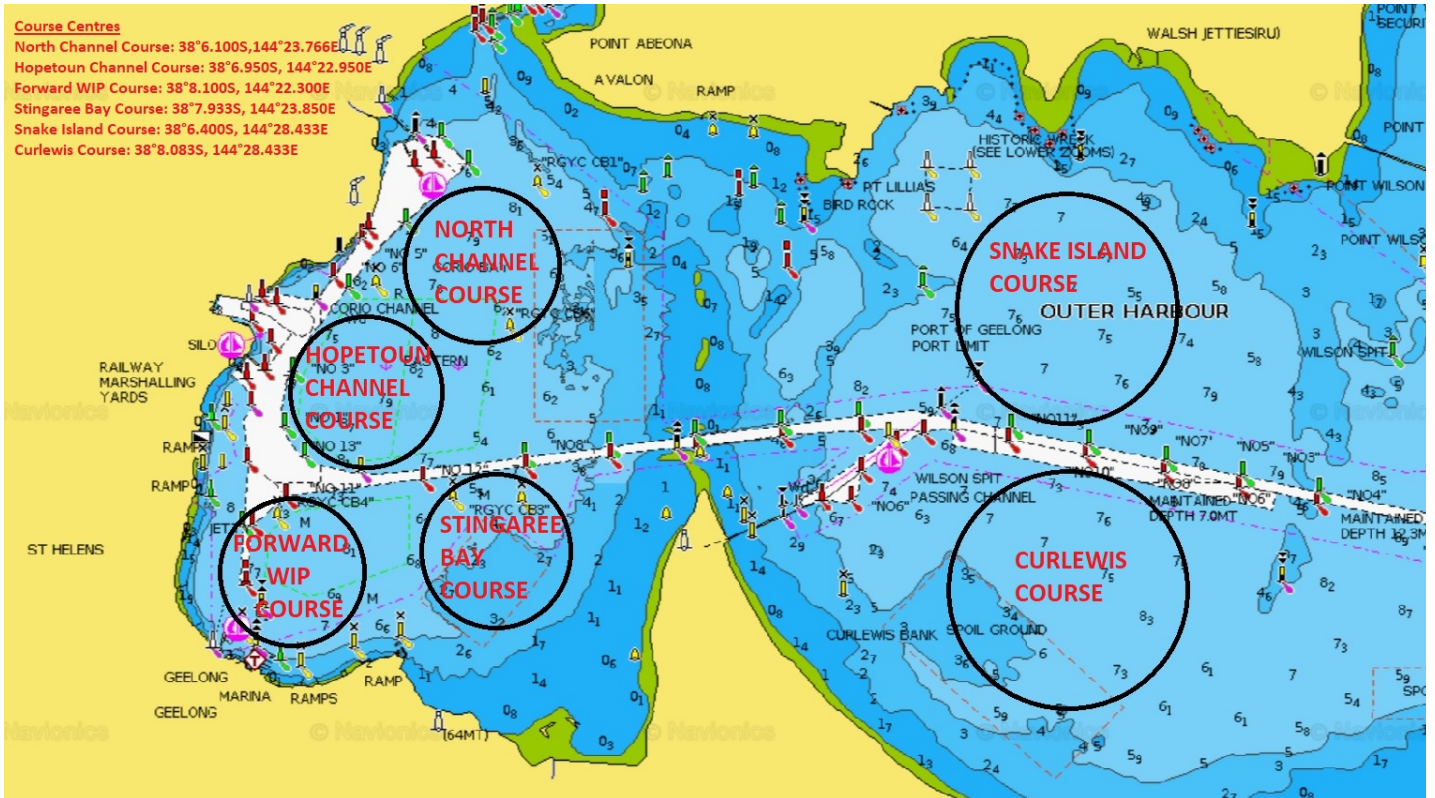


<b>LA</b>	<b>COURSE: WINDWARD / LEEWARD with spreader mark and leeward finish</b>
<b>Signal</b>	<b>Mark Rounding Order</b>
<b>LA2</b>	<b>Start – 1 – 1a – 2s/2p – 1 – 1a – Finish</b>
<b>LA3</b>	<b>Start – 1 – 1a – 2s/2p – 1 – 1a – 2s/2p – 1 – 1a – Finish</b>
<b>LA4</b>	<b>Start – 1 – 1a – 2s/2p – 1 – 1a – 2s/2p – 1 – 1a – 2s/2p – 1 – 1a – Finish</b>



Attachment B

Course Locations



## Attachment C

### Format of Racing

#### For 49er and 49er FX

The Championship will be in three series:

1. Qualifying Series
2. Final Series
3. Medal Race

#### For Nacra 17

The Championship will be in two series:

1. Opening Series / Single Series
2. Medal Race

#### For 49er and 49erFX

##### 1. Qualifying Series (Days 1, 2 and 3)

1.1 The boats will be split into THREE fleets for 49er and TWO fleets for 49erFX of approximately equal numbers of boats. The Qualifying Series will consist of a maximum of TEN races for 49er and NINE races for 49erFX. However, if less than SIX races have been completed by all fleets by the end of Day 3, the Qualifying Series will continue.

1.2 The Organising Authority will make initial fleet assignments on the basis of the top 50 ranked boats from the World Sailing rankings, with the remainder being taken in numerical order of sail numbers. The method of assignment to fleets will be as per 1.3 below. The ranking will remain in force until the end of the day during which the 2nd Qualifying Race is completed by all fleets.

1.3 If all fleets have completed the same number of races, boats will be reassigned to fleets on the basis of their Qualifying Series scores as detailed below. If all fleets have not completed the same number of races by the end of a day, the fleets with fewer races will continue racing the following day until all fleets have completed the same number of races. However, the reassignments will be calculated for those races, numbered in order of completion, completed by all fleets. Reassignments will be made as follows:

#### FOR 49er

<u>Place in Qualifying Series</u>	<u>Fleet assignment</u>
First .....	Yellow
Second .....	Blue
Third .....	Red
Fourth .....	Red
Fifth .....	Blue
Sixth .....	Yellow
and so on	

#### For 49erFX

<u>Place in Qualifying Series</u>	<u>Fleet assignment</u>
First .....	Yellow
Second .....	Blue
Third .....	Blue

Fourth..... Yellow  
and so on

Fleet assignments will be based on the ranking available at 2000 that day regardless of protests or requests for redress not yet decided. However at the end of the Qualifying Series, the fleet assignments will be made no later than 0700 on the day they take effect.

**2. Final Series** (Days 4, 5 and 6)

- 2.1 For 49er and 49erFX the top 25 boats based on their Qualifying Series scores after Day 3 will race in the Gold fleet (unless the Qualifying Series has been extended under section 1.1 above).
- 2.2 The remaining boats will race in the Silver or if appropriate the Bronze fleet of approximately equal numbers depending on the number of boats.
- 2.3 Days 4 and 5 THREE races are scheduled per day for each fleet.
- 2.4 Day 6 TWO fleet races are scheduled for ALL Fleets
- 2.5 No warning signal for the Final Series will be made after 1400 on Saturday 15 February

**3. Medal Races** (Day 6)

- 3.1 No warning signal for the Medal Races will be made after 1600 on Saturday 15 February.
- 3.2 The Medal Race will be for the top 10 boats overall in the Gold Fleet.  
ONE race, target time 20 minutes, double low points scoring
- 3.3 The points for each boat carried forward into the Medal Race will be as SI 20.9 after the Final Series.
- 3.4 [DP] Medal Race boats shall be made available for equipment inspection no later than 60 mins before the Medal Race warning signal. A quarantine area may be set aside for the competing Medal Race boats. Boats shall comply with any instructions of the Technical Committee concerning inspection or quarantine.

**For Nacra 17**

**4. Opening Series** (Days 1 to 6)

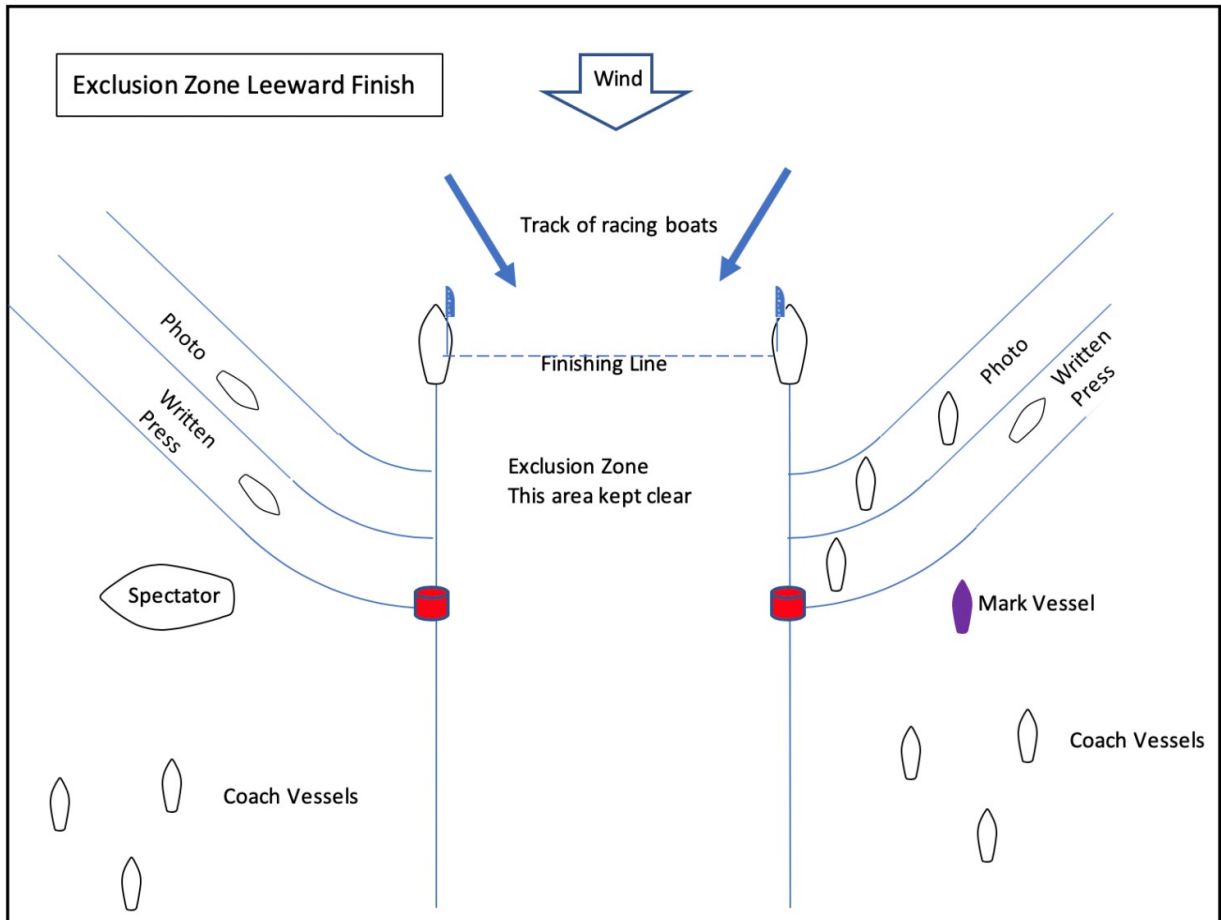
- 4.1 The boats will race in a Single Fleet. The Opening Series will consist of a maximum of SEVENTEEN races
- 4.2 Days 1 to 5 THREE races are scheduled per day  
Day 6 TWO races are scheduled
- 4.3 No warning signal for the Opening Series will be made after 1400 on Saturday 15 February

**5. Medal Race** (Day 6)

- 5.1 No warning signal for the Medal Races will be made after 1600 on Saturday 15 February.
- 5.2 The Medal Race will be for the top 10 boats overall in the Opening Series.  
ONE race, target time 20 minutes, double low points scoring
- 5.3 The points for each boat carried forward into the Medal Race will be as SI 20.9 after the Opening Series.
- 5.4 [DP] Medal Race boats shall be made available for equipment inspection no later

than 60 mins before the Medal Race warning signal. A quarantine area may be set aside for the competing Medal Race boats. Boats shall comply with any instructions of the Technical Committee concerning inspection or quarantine.

## Attachment E Finishing Exclusion Zone



## Attachment D

### Provisional Racing Schedule

Courses will be allocated to Course Locations on a daily basis when expected weather conditions are known

2020 World Championship - Geelong			
Warning signal			
Day 1 - Feb 10			
Qualifying	Course A (red WIP marks)	Course B (orange marks)	Course C (pink marks)
Course Location			
10.55	49er 3 races	49er 3 races	49er 3 races
Not Before 12.55	49erFX 3 races	49erFX 3 races	Nacra 3 races
Day 2 - Feb 11			
Qualifying	Course A (red WIP marks)	Course B (orange marks)	Course C (pink marks)
Course Location			
10.55	Nacra 3 races	49erFX 3 races	49erFX 3 races
Not Before 12:55	49er 4 races	49er 4 races	49er 4 races
Day 3 - Feb 12			
Qualifying	Course A (red WIP marks)	Course B (orange marks)	Course C (pink marks)
Course Location			
10:55	49er 3 races	49er 3 races	49er 3 races
Not Before 12:55	49erFX 3 races	Nacra 3 races	49erFX 3 races



**Sailing Instructions – first draft**

**49er, 49erFX and Nacra 17 World Championships**

<b>Day 4 – Feb 13</b>			
<b>Final Series</b>	<b>Course A (red WIP marks)</b>	<b>Course B (orange marks)</b>	<b>Course C (pink marks)</b>
<b>Course Location</b>			
10:55	Nacra 3 races	49erFX Silver 3 races	49erFX Gold 3 races
Not Before 12:55	49er Gold 3 races	49er Silver 3 races	49er Bronze 3 races
<b>Day 5 - Feb 14</b>			
<b>Final Series</b>	<b>Course A (red WIP marks)</b>	<b>Course B (orange marks)</b>	<b>Course C (pink marks)</b>
<b>Course Location</b>			
10:55	Nacra 3 races	49er Bronze 3 races	49er Gold 3 races
Not Before 12:55	49erFX Gold 3 races	49er Silver 3 races	49erFX Silver 3 races
<b>Day 6 - Feb 15</b>			
<b>Final Series</b>	<b>Course A (red WIP marks)</b>	<b>Course B (orange marks)</b>	<b>Course C (pink marks)</b>
<b>Course Location</b>			
09:55	49er Gold 2 races	49erFX Gold 2 races	Nacra 2 races
Not before 11:.25	49er Silver 2 races	49erFX Silver 2 races	49er Bronze 2 races
Not before 13:55	Nacra Medal Race		
Not before 14:40	49erFX Medal Race		
Not before 15:25	49er Medal Race		